

MESSAGE FOR 2019-2020

The 2019-20 Beach Volleyball Refereeing Guidelines and Instructions has a very important adjustment from its previous edition in relation to the new Medical Assistance protocols. Adding to that, attention is still advised for aspects such as the current criteria for the implementation of the service rule in relation to the 12 sec rule (this includes the introduction of a four ball system), the criteria for assessing hard driven ball and coach's assistance at their team's warm up. Starting from 2014, in addition to guidelines and instructions, this document also includes all relevant protocols (i.e. Official Match Protocol; Forfeit and Default Protocol; Ball Mark Protocol; (new) Medical Assistance Protocols; Protest Protocol; and First Referee Verbal Communication with the Audience Protocol). It is hoped that this document, which year after year is being updated in order to reflect the various rule and officiating developments, will be both informative and challenging. It should be read in conjunction with the Rules of the Game, and the Casebook, which as a package forms the foundation of our officiating references.

A new era at the FIVB encourages our governing bodies to bring Beach Volleyball closer and become more integrated into the overall organisational structure, all driven by "innovation". The game needs to adapt better to the desires of the various stakeholders with an emphasis on TV; therefore, our Officials (Referee Coaches, Referees, etc.) must understand their extremely important role in marketing Volleyball and Beach Volleyball.

In line with this, the International Federation has strongly invested in bringing new modern technologies to assist referees with the highest possible conditions. These include the "electronic scoresheet", the "wireless referee communication", and the "challenge system" – all are excellent tools for helping our referees to serve our sport at the highest possible level of competence. The challenge here is that referees need to understand that even if technology is there to support them, their personal commitment and existing expertise is also vital. Embracing this new approach requires a spirit of progress and responsibility. Technology will only help if you know how to use it.

Referees must pay particular attention to several relevant highlights on the criteria for enforcing the Rules of the Game maintaining both consistency and universal criteria at all times. The quality of officiating in these particular areas is a key factor in the successful communication to all parties of the criteria and the objectives defined by the FIVB (players, officials, spectators, television, media, and promoters).

It is with this in mind that we strongly recommend that you read carefully this document and understand its main areas of emphasis while applying the spirit and meaning of these during your officiating throughout the season, a very important one as we start a new Olympic Qualification period leading towards Tokyo 2020.



On top of the points mentioned above, among others, main areas of emphasis for 2019-20 address:

"game delays"

focusing in the enforcement of the service rule in relation to the 12 sec rule; the timing of the TOs, TTOs, and set intervals; including eliminating prolonged discussions by team captains with officials.

"requirements of conduct";

"misconduct and its sanctions"

Please note that several of these correspond to rule changes implemented from 2012 and onwards (i.e.: "team leaders (captains)"; "criteria for assessing overhand setting; "screen"; "medical injury protocol"; etc.) and not just those from the season 2015 (i.e.: "player at the net "; "official signals"; etc.).

Other areas of emphasis added in recent years include; clarification of legal fingertips attack contact, consistency at the implementation of misconduct sanctions in due coordination with the enforcement at FIVB World Competitions of a "misconduct sanction fee scale", criteria for allowing medical treatment outside of medical assistance protocols and to regulate the use of toilets by players during the game, coach's participation at their team's warm-up, etc.

Best of luck with your officiating in 2019-20

José Casanova

FIVB Beach Volleyball Refereeing Commissioner

CONTEXT FOR OFFICIATING

REFEREES apply the rules of the game. Officiating at Beach Volleyball events requires constant awareness to any change and / or interpretation of the official Beach Volleyball rules. For the correct application of the rules, REFEREES must know them faultlessly and apply them decisively and correctly within the context of the game.

The rules must reflect the demands of the development of the sport. When they are formulated and / or modified, the following factors should naturally be taken into consideration:

- Technical and tactical development
- Spectacularity
- Publicity, marketing and promotion
- Financial requirements
- Cultural, recreational and societal changes



REFEREES must be able to take correct decisions with authority whenever a situation arises which is not specifically clarified in the rules. REFEREES therefore should have a complete knowledge of the theoretical Refereeing guidelines and of the general functions of the rules, which:

- Define the characteristics of the game
- Define proper techniques
- Allow the game to be played safely under fair conditions
- Encourage sportsmanship
- Encourage top performance and spectacularity
- Allow a game that can be marketed and promoted well

This will allow REFEREES to work much more accurately and follow the “spirit of the rules”.

PERFORMANCE OF OFFICIALS

The FIVB Refereeing Coach is responsible for all refereeing issues and reports to the FIVB Technical Delegate. The FIVB Refereeing Coach will work to instruct, facilitate the work of and provide feedback to officials working in various capacities.

REFEREES also work under close co-ordination with the Refereeing Manager at a given event. Together with the Host TV Broadcaster, Promoter and other Officials, REFEREES must also ensure that production and organisational needs of television are met. These include match protocol, TV replays, official photographer and TV camera positions on the field of play.

Although Beach Volleyball is a modality of Volleyball, there are fundamental differences in the playing numbers, techniques of the players, match formats and nature of the conditions, which guide the differences in the rules between these two games. Therefore, there are refereeing techniques, interpretations, protocols and situations, which are different. REFEREES must understand these clearly.

In conclusion, REFEREES not only have to perform their duties and direct the match according to the rule text and its spirit, but their refereeing performance is also governed by contributing factors such as health (physical and mental), legal factors (health and safety laws, drug testing and Referees’ Ethics Code), and social factors which are not purely technical in nature. REFEREES should always remember that they are not only there to officiate, they are also teacher, promoter and administrator and may be required to assist the Referee Coach if requested. In this way they have a delegated responsibility to act in the best interests of the FIVB and its various stakeholders. REFEREES should be closely aware of these factors, conduct their duties following ethical considerations both on and off the court, while also directing the match accordingly under the rules.

1. PLAYING AREA

1. One day before the competition, the FIVB Delegates, with the assistance of the REFEREES, must confirm that the dimensions as well as the quality and safety of the boundary lines and all other sport equipment, meet the FIVB requirements.

2. Before the start of every daily session the REFEREES must check that:

2.1 The net is perpendicular to the court and the dimensions of the boundary lines and free zone are accurate.

Note: In a square court (8m x 8m for one side), the length of the short diagonals (11.31 meters) must be equal.

2.2 The playing area, sand condition and sport equipment are safe for the players and officials.

Note: Boundary lines must be properly secured and present no danger to players. Exposed hooks, metal fastening devices or spikes to hold the lines in place are not acceptable.

Note: The relevant FIVB Delegate(s) take the final decision if temperatures and/or poor weather conditions make it unsafe to play.

3. Prior to each match officiated, the REFEREES must, during the warm up time, inspect the court and free zone area checking its symmetry, safety and general condition.

Note: During the match, the SECOND REFEREE must pay attention to the fact, that the free zone must always be free from any obstacle which can cause an injury to a team member (drinking bottles, TV camera tripods, sand levellers rakes, etc.).

4. The playing court is maintained by the sand levellers who are responsible for raking it during the game, between sets, and between matches. Six sand levellers will be used and placed outside the free zone as per diagram 6 in the Rules. Two sand levellers will rake the area under the net; two will rake the area around the boundary lines; and two will rake the service reception positions and the service area.

Note: The main purpose of this procedure is to:

- secure that the sand is levelled inside the court and service area - the sand tends to become dug out in the service reception positions and uneven near the net;
- ensure safe and equal conditions to either teams;
- prepare the sand to allow good officiating judgments - a flat area exists around all boundary lines both inside and outside the court lines in order to facilitate the work of the LINEJUDGES and the REFEREES to assess the "in" and "out" balls.

Note: The SECOND REFEREE is responsible to check that this is done properly by the sand levellers and together with the LINEJUDGES they should continuously monitor during the match the condition of the lines and the playing court, ensuring that both courts are in equal condition.

Note: Same principle applies for watering procedures which furthermore require prior authorization by the relevant FIVB Delegate(s).



2. NET AND POSTS

REFEREES must check that:

1. The height of the net must be as per Rule 2.1.

Note: Before each match, after the sand has been levelled, the SECOND REFEREE must check the height of the net before the coin toss. The first referee remains near the second referee during this verification to supervise the measurement.

2. The net, posts and referee's stand are properly padded so that a player is not a risk of injury from exposed hard or sharp surfaces.

Note: If REFEREES feel that the equipment is not in accordance with the rules, they must immediately inform the relevant FIVB Delegate(s) or the Court Manager to ensure the problem is fixed.

3. The length of the net is 8.5m and the distance from outside each sideline to the respective post is between 0.7 and 1m.

Note: For FIVB, World and Official Competitions the REFEREE must ensure that the net meets all requirements in accordance with respective FIVB marketing regulations.

Note: during the game (and especially at the beginning of each set), the corresponding LINEJUDGE(S) must check whether the side bands are exactly perpendicular to the playing surface and placed directly above each side line and whether the antennae are just at the outer edge of each side band. If this is not the case, they should be readjusted immediately.

4. Equipment must be as specified in Rules 2.1 to 2.6. Only FIVB approved equipment is used for FIVB, World and Official Competitions.

Note: *Additional equipment: benches for the teams, SCORER'S table, a stand for the FIRST REFEREE, a rod to measure the height of the net, a pressure gauge for checking the pressure of the match balls, a pump, a set of numbered paddles 1 and 2, a table scoreboard, a set of 4 flags for the LINEJUDGES, at least 2 levelling rakes, at least 8 towels for LINEJUDGES and ball-retrievers, an ice chest, a medical first aid kit, a measuring tape (minimum 20m). A scoreboard and a system for watering the court are compulsory for FIVB, World and Official Competitions.*

Note: *The organizer must also provide reserve equipment as well as umbrellas and ice chests plus water at the team's areas. Throughout the match, the SECOND REFEREE is responsible to monitor that water is always available for the players.*

3. BALLS

1. The Mikasa VLS 300, (67 cm circumference: ± 1 cm) the exclusive and official ball for FIVB, World and Official Competitions, is used.

Note: *For FIVB, World and Official Competitions, FIVB homologated balls are provided by Mikasa to the competition organisers, and controlled for the competition by the concerned FIVB Delegate(s) and further checked by the match REFEREES.*

2. The SECOND REFEREE takes possession of the 5 match balls before the match and checks that all of them have identical characteristics (colour, circumference, weight and pressure). Together with the FIRST REFEREE, he/she selects the four match balls and the reserve ball. The SECOND REFEREE is then responsible for them throughout the match and will assist returning the balls to the court manager at the conclusion of the match.

Note: *Players do not have the right to decide which balls will be used in their match.*

3. Reserve sets of 5 balls must be available in case of rainy conditions. In case the match balls get excessively heavy, the SECOND REFEREE is responsible to coordinate the process of replacement of the 5 match balls between sets.

4. A four-ball system shall be implemented at FIVB, World and Official Competitions. Six ball retrievers will be used and placed in the free zone as per diagram 6 in the Rules. Before the start of the match, the ball retrievers on positions 2 and 5, plus the one (positions 1 or 4) on the side of the receiving team will each receive a ball from the SECOND REFEREE. The same applies in case a third set will be played. During the match, when the ball is out of play:

4.1 If the ball is outside the court, it will be recovered by the closest retriever and immediately rolled to the retriever who has just passed his/her ball to the player who was to serve.

4.2 If the ball is on the court, the closest retriever preferably on positions 3 and 6 must immediately recover the ball and roll it to the retriever who has just passed his/her ball to the player who was to serve. (The ball is transferred between the ball retrievers by being rolled on the sand (not thrown), whilst the ball is out of play, preferably not in the side where the scorer's table is situated.)

4.3 At the moment the ball is out of play, so that the service can take place without any delay the ball retriever closest to the point in the court where the player going to serve will step out of the court, shall give the ball into the hands of the server as soon as he/she leaves the court. Specific instructions to ball retrievers in this respect must be made and emphasised at the practical clinic.

4. TEAMS

1. REFEREES must check that only the two players for each team indicated on the score sheet participate in the match.

Note: *In each team, one of these players will be the team captain and REFEREES must check that this is recorded on the score sheet prior to the match.*

2. REFEREES must verify that both players of either team are present to participate in the match. In case a player or a team might be missing, the SECOND REFEREE is responsible to inform the relevant FIVB Delegate(s) in order to attempt and find the missing player/ team.

3. For FIVB, World and Official Competitions, external assistance or coaching is not allowed during the match. However coaches are allowed in the court during the respective team's warm-up until the start of the official match protocol. Where applicable, upon confirmation by the Referee Coach it is possible for the team coaches to stay until immediately before the start of the coin toss.

Note: *Team coaches are not allowed within the playing area during the match. If a team complains about the opponents receiving external assistance or if the REFEREES clearly see anyone coaching a team during a match, they must immediately pass this information to the relevant FIVB Delegate(s). REFEREES may be asked by the FIVB Technical Delegate to formally record the circumstances of such incident.*

Note: *Coaches are allowed in all age group events and the phases 1 and 2 of the Continental Cup.*

4. Teams have designated timeout areas and must use the same area throughout the entire match.
Note: *Should any question arise as to the allocation of the designated timeout area it is allocated by coin toss (as per Rule 4.4).*
5. Players' uniforms shall comply with the tournament regulations.
Note: *Uniforms are checked before the tournament but the FIRST REFEREE must check that players always have matching uniforms, especially shorts / bathing suit bottoms that comply with the tournament regulations (including sponsorship dimensions, number of logos, accessories, and temporary tattoos).*
Note: *The FIRST REFEREE should note the need to check uniforms for religious, racial, or political messages etc in order that they comply with IOC regulations.*
6. The FIRST REFEREE must check that the players wear the correct number (1 or 2) corresponding to their recorded name on the scoresheet.
Note: *In the case of matching uniforms and designation of chairs, Rule 4.4 shall apply (i.e.: coin toss).*
Note: *If the players are found to be incorrectly wearing the wrong uniforms (numbers 1 and 2) before, during or after a match this will be corrected by changing the uniforms and or scoresheet and or serving player as appropriate. No penalty shall apply.*
7. The FIRST REFEREE may authorise players to wear footwear (socks/shoes).
Note: *Use of footwear may be appropriate because of sand conditions or possible injury, but players must receive the authorisation of the FIRST REFEREE before using socks / shoes.*
8. For cold weather conditions the FIRST REFEREE may authorise players to wear appropriate clothes.
Note: *Use of leggings on court will be allowed if the temperature drops below 15 degrees Celsius.*
Note: *The clothes worn by players in case of cold weather conditions must be consistent in type, style, manufacturer, colour, sponsor, etc.*
9. Players cannot wear forbidden objects, which may give them an artificial advantage or cause injury to themselves or other players.
Note: *Players wear glasses and contact lenses at their own risk.*
10. Rule 4.5.3 states "Compression pads (padded injury protection devices) may be worn for protection or support. For FIVB, World and Official Competitions for seniors, these devices must be of the same colour as part of the uniform.
Note: *While the tops being supplied by the organizers this precludes any possibility for the athletes to prepare the correct colour of the forearm sleeves, so these must at least match the predominant colour of the shorts or bikini bottom. Only one player may wear, but if both do, they must be of neutral colour or the same colour design as part of the uniform. Neutral colors, black or white material can also be used.*
Note: *As these devices are for protection and support, they must have no padding or surface feature designed to give an advantage by providing additional ball control.*
Note: *Visible underwear should have the same colour as the part of the uniform it belongs to, and must not be longer than the shorts.*
11. The players must wear approved uniforms from the time they enter until they leave the playing area.

5. TEAM LEADERS (CAPTAINS)

1. Only the Captain can speak to the REFEREES while the ball is out of play, providing it is done in accordance with Rule 5.1.2. Players have NO right to question judgement calls - this includes, but is not limited to, actions of players setting overhand with fingers. The team Captain(s) may only inquire as to the application or interpretation of a rule.
Note: *REFEREES must at all time have full awareness of who the captains are.*
Note: *the 1st REFEREE'S explanation, when required, should be clear and concise, use correct **English Technical Terminology** which may as appropriate be accompanied by hand signals. No further delays should be permitted and the players should be urged to immediately resume play.*
2. Team Captains have the right to formally protest about referees' application or interpretation of the rules before, during or after a match. However it is improper for the FIRST REFEREE to accept a Protest that involves playing actions or misconduct unless there is a challenge on possible misinterpretation of the Rules of the Game. Only the following three criteria must be considered in evaluating whether to accept a Protest as being valid or not and therefore capable of potential consideration:
- 2.1 The REFEREE misinterpreted or did not correctly apply the rules / regulations, or did not assume the consequences of his/ her decisions.
- 2.2 There is a scoring error (rotation or match score).
- 2.3 A technical aspect of the match conditions (weather, light etc).
Note: *For FIVB, World and Official Competitions, REFEREES must be familiar with all aspects of the "Protest Protocol" (see page 35) especially the use of two Levels of protest during the match (Level 1 – resolved at the time of the protest; Level 2 – resolved after the match).*
3. The Captain must sign the score sheet and represent the team at the coin toss.

6. PLAYING FORMAT

1. REFEREES must judge faults and apply penalties according to the Official Beach Volleyball Rules.
 2. If two or more faults are committed successively, only the first one is considered. For this reason, it is most important that REFEREES blow the whistle immediately upon seeing a fault. If both REFEREES blow their whistle to stop play, the first whistle will be considered.
 3. If two opponents commit two or more faults simultaneously, a double fault is committed and the rally is replayed.
 4. If there is any doubt about the order of faults, it is good officiating technique to quickly discuss or clarify information with your fellow officials.
 5. In Rally Point Scoring (RPS) sets one and two are played to 21 points, with a 2-point advantage needed. There is no cap. The third set, if needed, would be played to 15 points with a 2-point advantage, with no cap needed.
 6. A team that is declared in default will lose the match with a set score of 0-21, 0-21 and a 0-2 match result, (Rule 6.4.1, and 6.4.2).
 7. In RPS a point is gained from each rally or from a penalty (misconduct or delay).
 8. A team that is declared incomplete will retain any points gained or sets won with the opposing team being awarded the points needed to win the set and/or the match (Rule 6.4.3).
- Note:** For FIVB, World and Official Competitions whenever the Pool Play format is implemented, Rule 6.4 may be subject to modifications as stated in the Specific Competition Regulations issued by the FIVB in due time, establishing the modality to be followed for treating the default and incomplete team cases.

7. STRUCTURE OF PLAY

1. The coin toss is conducted before the warm-up, and not before the SCORER has arrived courtside and is ready to record the results of the coin toss on the scoresheet.
Note: After the coin toss the captain must sign the scoresheet to confirm the details recorded especially that the number (1 or 2) of the player matches the player's name. They must also confirm their service order and side of the court as soon as possible.
2. After the coin toss, the SECOND REFEREE must pass all relevant information to the SCORER.
Note: The same applies in case he/ she is required to conduct the toss between sets 2 and 3 (Rule 23.2.9). In this case, he/ she then must pass all relevant information also to the FIRST REFEREE.
3. It is important that REFEREES keep to the total protocol time (esp. warm-up session), allocated to the teams so that the tournament is not prolonged during the day. This protocol should be confirmed at the Technical Meeting. REFEREES must be sure of this allocated time and ensure there are no delays.
Note: REFEREES should closely study the Official Match Protocol (see page 21), especially the total length of the protocol and key times within it for the match officials.
4. It is important to follow the protocol to avoid confusion should a forfeit occur because of one team not being present at the court. A REFEREE should not assume a team will not be present based on a previous forfeit by the team. Be sure that the scoresheet is completed before allowing anyone to sign it. Notify the relevant FIVB Delegate(s) in the case of possible forfeit. (The coin toss should be conducted; the players present notified of the official warm up time beginning by blowing of the whistle and ending by blowing of the whistle. Then a whistle indicating teams to start the match. If at this time a team is incomplete the forfeit is given).
Note: The FIRST REFEREE must follow the instructions of the relevant FIVB Delegate(s) especially in exceptional circumstances keeping all officials and players aware of situation. REFEREES at all times should follow the procedure as defined in the "Forfeit and Default Protocol" (see page 23).
5. A team can only play with two players, no more, no less. Therefore, there is no substitution or replacement of players (Rules 7.3.1, 15.2.2).
6. Players may position themselves anywhere within their respective court. Therefore, there are no positional faults at the moment of the server's hit.
Note: The SECOND REFEREE may at the time of service be watching both teams in order to assist the FIRST REFEREE but they must do so in a way that ensures they still primarily watch the receiving team.
7. If the incorrect player is found to have served, the team can only be penalized by loss of service (or points scored) if, prior to the service, it had been correctly notified by the scorer, SECOND REFEREE or FIRST REFEREE that it was incorrect in accordance with the service order.
Note: If the correct procedure for notifying a wrong server has not taken place (e.g.: late notification or incorrect notification by the SCORER) the service order is merely corrected with the team(s) maintaining their points and a new service made.

8. STATES OF PLAY

1. The ball is in play from the moment the server contacts the ball after the whistle for service given by the first REFEREE.
2. The ball is out of play the moment either REFEREE whistles. REFEREES must blow the whistle at the moment of the fault (e.g.: for "ball in" or "out").
3. REFEREES must remember that the ball mark could be completely outside the line, but the ball called "in" if the ball contacted the boundary line, which was slightly raised by a mound of sand (Rule 8.3).

Note: REFEREES must be aware that the line may move due to the ball landing near it. This should not influence the decision, which is based on actual contact with the line.

Note: Team Captains have no right to insist that a REFEREE review a ball mark on the sand, and only where significant doubt exists as to whether the ball is in or out the FIRST REFEREE may decide to review a ball mark in strict compliance with the "Ball Mark Protocol" (see page 26).

4. The ball is "out" when it completely crosses the lower space under the net, but this is signalled by the REFEREE pointing to the imaginary centre line. (Diagram 9/22).

Note: it is the SECOND REFEREE'S responsibility to call the ball recovered completely on the opponent's side under the net (Rule 23.3.2.6).

9. PLAYING THE BALL

1. In a playing action, players have the right to play the ball beyond the free zone (except the service). A ball may be therefore recovered from any point outside the free zone.
2. A team is entitled to a maximum of three hits for returning the ball over the net. If two players contact the ball simultaneously it is counted as two hits (except at blocking), and either player may contact the ball for the third hit.

3. If simultaneous contacts by opponents occurs over the net and the ball remains in play, the team receiving the ball has three more hits.

4. If the ball goes out after the simultaneous contact, the fault is charged to the team on the opposite side. If this simultaneous contact causes the ball to directly hit the antenna, there will be a replay.

Note: This situation must be examined very carefully, as an extended simultaneous hit over the net is not a fault and after this hit, the ball may land outside the court or contact the antenna.

5. If simultaneous contacts by opponents occurs over the net and both opponents make an extended contact with the ball, play can continue after this action.

6. Within the playing area, a player is not permitted to take support from a team-mate or any other structure/object in order to reach the ball (Rule 9.1.3).

7. The ball may be played with any part of the body (except when serving).

8. The ball must be hit, not caught and/ or thrown. It can rebound in any direction.

Exceptions: See Rules 9.2.2.1 and 9.2.2.2

9. During the action of players setting overhand with fingers, the ball must be played with one quick motion. There must not be any significant movement of the ball downwards whilst in the hands and the ball may not visibly come to rest in the player's hands.

Note: Technically in ALL hand setting actions the ball rests and also moves downward whilst in contact with the hands of the player. It is the quickness of this action that will determine if the "downwards motion" or the "length of the contact" is of visible significance, and consequently a fault.

Note: There are various unique methods of setting and passing the ball in Beach Volleyball. A REFEREE must understand the nature of these ball contacts concentrating on their length (the emphasis quite correctly with the catch or thrown ball is the duration of the contact) and how technically correct or clean the contact was (the emphasis with the double contact is that this is not indicated by the spin of the ball but by the fact that a clear fault – time difference between the two hands that contact the ball – has occurred and that this is visible for the REFEREE).



Note: REFEREES must find consistency of application around duration of contact and try to maintain uniform criteria in ball handling in general not only on a game basis but also from day to day and tournament to tournament.



10. In defensive action of a hard driven attack, the ball contact can be extended momentarily overhand with the fingers. A good indication of a hard driven attack is the time in which the defensive player had to react to play the ball. If the defensive player had time to make a decision or to react by changing, their technique as to how to play the ball it was probably not a hard driven ball. **However referees must be 100% sure before they blow the whistle for a fault.**

Note: This may apply to the second touch of a team if the block contact was slight and the ball is still a hard driven attack, or to the defensive action (team first contact) after a ball has been blocked.

Note: A hard driven ball by the offensive player may occur from a player standing on the ground. It is not necessary that they jump and spike the ball in all circumstances. REFEREES must be consistent in their application of the hard driven ball criteria clearly understanding the nature of the attack as it passes over the net, after it contacts a block or net etc.

8. There may be consecutive contacts, provided it is one attempt to play the ball when it is the first contact by a team. The exception to this is the overhand finger action.

Exception: Hard driven attack (Rule 9.2.2.1.)

10. BALL AT NET

1. The Rule 10.1.2 gives the right to play the ball from the opponent team's free zone. The SECOND REFEREE and the LINEJUDGES must understand this rule well! During the match, they must recognize practically and make the appropriate movement to give space to the player who will replay the ball to his/her court! If the ball crosses the vertical plane of the net, within the crossing space, to the opponent's free zone and it is touched by the player attempting to return this ball back, the REFEREES must whistle the fault at the moment of the contact and show "out".

Note: Outside the antennae is defined as passing completely outside or partly outside (i.e.: over) the antennae. A ball that passes between any of the ropes or cables that link the net with the post without touching any of them will be able to be legally continued in play i.e.: the gap between net and post is considered part of the external space.

2. Play can continue after the ball is driven into the net provided it is within the limits of the three team hits and it contacts the net between the antennae without touching them.

11. PLAYER AT THE NET

1. A player may enter the opponents' space, court, and/or free zone, provided that this does not interfere with the opponents' play (Rule 11.2).

2. Interference under the net is primarily the SECOND REFEREE'S responsibility to judge. Contact by players is not always interference. If the contact is incidental and did not interfere with the players' ability to make a play on the ball there is no fault.

3. However, interference may be penalised if the contact is not physical but merely threatened. The player may be in the path of the player making a play on the ball, thus causing the player to have to go around them to make a play on the ball.

Note: Interference may be penalised if the player's ability to play the next or subsequent hit is impeded.

4. An interference fault may be penalised regardless of the player's position on the playing court or in the free zone. The REFEREE may in some cases clearly see that the player has deliberately substantially altered his/ her position in order to interfere with the other player's attempt to play the ball. This is a fault.



5. We draw attention to the rule concerning the contact of the player with the net: **“Contact with the net by a player between the antennae, during the action of playing the ball, is a fault. The action of playing the ball includes (amongst others) take-off, hit (or attempt) and landing.”**

6. Any player close to the ball as it is played, and who is him/herself trying to play it, is considered in the action of playing the ball, even if no contact is made with it.

Attention should be paid to the following situation:

- a) If a player is in his/her playing position on his/her court and a ball is driven from the opposing side into the net and causes the net to touch the player (Rule 11.3.3), no fault is committed by the latter.
- b) Incidental contacts of the net with players caused by a significant alteration of its normal shape due to the wind must not be considered a fault and play should continue.
- c) Incidental contact of the hair with the net must not be considered a fault unless it is clear it affected the opponent's ability to play the ball or interrupted the rally (e.g. a pony-tail gets tangled in the net).

7. Where a player interferes with the opponent's play, by:

- a) using the net between the antennae as a support or stabilizing aid,
- b) creating an unfair advantage over the opponent by touching the net,
- c) making actions which hinder an opponent's legitimate attempt to play the ball,
- d) catching/holding on to the net

then this will be whistled as:

Net fault, if the action is a “net contact interference”, or

Interference, if the action involves “interference through being in the opponent's space and court”.

8. REFEREES' attention is drawn to the fact that the cables binding the net beyond the 8.00/ 8.50 m in length do not belong to the net. This also applies to the posts, as well as the portion of the net that is outside the antennae (in case of an 8.50 m net). Thus, if a player touches an external part of the net (top band outside the antennae, cables, poles, etc.), this shall not be considered as a fault, unless it interferes with the opponent's play.

9. A player who deliberately reaches towards and contacts the ball through the net when the ball is on the opponent's side causing the opponents not to have a play on the ball will be penalised. Conversely, a ball hitting a player through the net when the player did not attempt to deliberately contact the ball would not be a penalty (e.g.: they had a potential play on the ball or were in an existing position). See 7. b) and c) above.

Note: *The first situation above is penalised as a net touch as the player is considered deliberately to have caused the net to touch them, not the ball causing the net to touch them.*

10. On account of the top quality of the teams participating, the game near the net is of fundamental importance and therefore, REFEREES must be particularly attentive, especially in cases where the ball rubs against the blockers' hands.

Note: *This is equally important for plays when the ball after hitting the block is sent outside the court or plays when the ball after hitting the block keeps in play, as in this case it counts as the first hit of the team.*

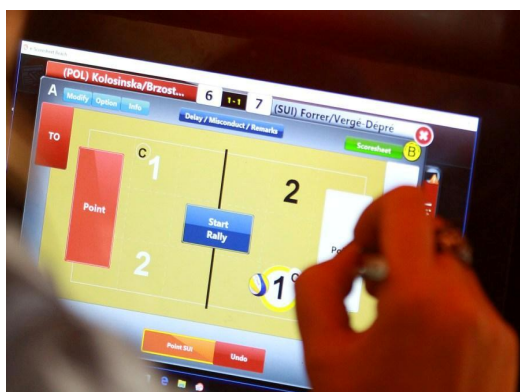
11. In order to facilitate the collaborative work of the two REFEREES, the division of work shall be as follows: the FIRST REFEREE will – after assessing the attack contact – concentrate on looking at the entire length of the net (top white band to bottom white band) on the attackers' side of the net and the SECOND REFEREE will concentrate on looking at the entire length of the blockers side of the net.

12. SERVICE

1. Once a team has determined its service order, it must be maintained throughout the individual set. The ASSISTANT SCORER must hold up a numbered paddle (1 or 2) to indicate the correct server. He/she should correct any incorrect server prior to the whistle for service and the service hit. Therefore, a service order fault should never occur unless a player insists on serving out of order. This is a service order fault and is penalised.

Note: *If the correct procedure for notifying a wrong server has not taken place (e.g.: late notification or incorrect notification by the SCORER) the service order is merely corrected with the team(s) maintaining their points and a new service made.*

Note: *This procedure only applies if the wrong server is from the team that legally should serve. If the wrong team serves (either player), play must stop and be recommenced with no points scored. This will usually occur at the start of the set.*



2. The server does not have to start his/ her approach for service in the service zone. At the moment of the service hit or takeoff for a jump service, the server must not be in contact with either the court (the end boundary line included) or the ground outside the service zone. The server's foot may not go under the line. After the serve, they may step or land outside the service zone, or land inside the court.

Note: *It is not necessary for the server to be in the service zone for him/ her to receive the ball. It is not necessary for the server to be in the service zone when the FIRST REFEREE whistles for service – but common sense must prevail and the teams must be ready.*

Note: *If the server moves to the service zone immediately after the end of the rally, and the time between the end of the previous rally and the whistle for the next service will not take more than 12 sec, then the referee may consent to the player's eventual routine for service preparation if this is part of the 12 sec between the rallies. However, if the server initiates any prior routine (i.e. wiping glasses, talking to partner, smoothing the sand, fixing lines, etc.) **before** he/ she starts walking to the service zone, then the referee must make sure that the server accepts the ball as soon as she/ she gets close to the service zone. Refusing the ball or ignoring the ball retriever in such cases, shall be immediately sanctioned as a delay.*



3. REFEREES must understand that a line may move because a player kicks / pushes the sand. Therefore, the line moving is not necessarily a fault.

Note: *The FIRST REFEREE should be conservative in the calling of a foot fault relying primarily on the LINEJUDGE signalling a fault.*

4. A player has only one service attempt, once the ball has been released, to initiate service (Rules 12.4.6, 12.4.7).

Note: *Many players will release the ball from their hand(s) before the actual toss for service. The FIRST REFEREE must clearly understand carefully the intention of the player.*

5. A service ball touching the net is not a

fault.

6. The first referee should pay attention to screening during the execution of the service. A player makes a screen simply by standing in such a way that both the server is hidden and the ball passes low over the player. (i.e. both criteria need to be satisfied for player actions/positions to be judged as a screen).

13. ATTACK-HIT



1. The open hand "dink or tip" to direct the ball to the opponent's court with the fingers is a fault. The ball poked with fingertips or knuckles is allowed.

Note: *In case of fingertips contact the fingers that contact the ball must be together and rigid.*

Note: *Caution must be taken when a player contacts the ball first with the fingers and then pushes the ball into the block causing a "catch" over the net. This first contact is a fault and should be penalised. If both teams contact the ball simultaneously, causing an extended ball contact (over the net), this is not a fault and play should be allowed to continue.*

2. An opponent may not complete an attack hit on a service, while the ball is completely above the height of the net. This is a fault.

3. A player may complete an attack-hit using an overhand pass (which has a trajectory perpendicular to the line of the shoulders), either forwards or backwards.

Note: *The REFEREE should consider the line of the player's shoulder at the initial stage of the contact with the ball. Players must establish their shoulder position before the contact is made.*

14. BLOCK

1. Blocking is the action of players close to the net to intercept the ball coming from an opponent by reaching higher than the top of the net (Rule 14.1.1). The part of the player contacting the ball need not be above net height but the player must have some part of the body above net height for the contact to count as a block.

2. The block contact is counted as a team hit.

3. Any player, including the one who has touched the ball at the block, may execute the first hit after the block (R.14.4.2). This would be the second team contact because the block contact is counted as a team hit (R.14.4.1).

Note: *It is illegal to block a serve.*

15. INTERRUPTIONS

1. An interruption is the time between one completed rally and the first referee's whistle for the next service, and the only regular game interruptions are time-outs.

Note: *During all regular interruptions (including Technical Time Outs) and set intervals, players must go to the designated players' areas.*

2. Each team is entitled to a maximum of one timeout per set. The duration of the timeout is 30 seconds, which cannot be shortened.

Note: *The REFEREE commences the timing of the timeout from the time of the whistle accompanied by the signal for timeout.*

Note: *The following steps should be followed under usual circumstances for the timing of Timeouts:*

- *15 seconds to leave the court (start timing as above)*
- *30 seconds timeout for the players at designated chairs*
- *SECOND REFEREE to blow their whistle at 45 seconds and signal for the players to return to the court*
- *SECOND REFEREE actively encourages the players to return to the court*
- *15 seconds to return to the playing court and prepare to serve or for reception*
- *Total elapsed time MUST not exceed 1 minute.*

3. Team Captains may request a timeout while the ball is out of play and before the whistle for service. Players must use the proper hand signal when requesting a timeout. If the Captain does not show the hand signal for a Timeout, either REFEREE will ignore their request and resume play immediately.

4. The REFEREES shall NOT accept a timeout request from the non-captain. This is an improper request. It is to be rejected without sanction unless repeated. So if it was not repeated, no delay warning or penalty applies.

Note: *However, there is no rule that says there cannot be a legitimate request from the captain during the same interruption. So the REFEREES could accept a timeout request from the captain.*

Note: *Improper requests that affect or delay the game shall be sanctioned for delay. REFEREES must study carefully the rule and understand what "improper request" means (see Rule 15.5).*

5. In sets one and two a technical timeout (TTO) will occur when the sum of the points is 21 points.

Note: *The ASSISTANT SCORER starts and ends the TTO with the use of the buzzer/ bell, with the teams then following the same procedure as for a time out. In case of no buzzer/ bell being available, the SECOND REFEREE starts and ends the timing of the timeout as per 15.2 above.*

Note: *At the end of the TTO, as soon as the teams start walking back to the court, the SECOND REFEREE whistles and signals court switch.*



16. GAME DELAYS

1. Examples of delaying the game are:

- (a) Prolonging the 12 seconds between rallies without authorisation;
- (b) Attempting to slow down the pace of the match;
- (c) Discussions with officials about decisions involving playing actions or misconduct;
- (d) Prolonged discussions by team Captains with officials about rules interpretation and/ or application, or declining to continue the match after the REFEREES have given their explanation;
- (e) Prolonging time outs or side switches;
- (f) Repeating improper requests in the same match;
- (g) Repeated requests to know the number of time outs used.

Note: Many different delaying tactics are being used by players while attempting to slow down the pace of the match. REFEREES are required to carefully identify these while monitoring that a constant pace shall be implemented between rallies. REFEREES should be consistent in the application of warnings / penalization for similar types of delaying tactics.

2. REFEREES must insist that players between rallies move directly to their position for service or reception. The time between rallies shall be 12 seconds. However, this may be extended to 15 seconds with the permission of the Technical Delegate in the case a situation of extreme weather conditions such as humidity or heat is officially declared. The time between rallies may be shortened if both teams are ready.

Note: The FIRST REFEREE will only allow a delay between rallies when not allowing it would represent substantial hazard, danger or threat to the safety of the player or would decrease the image / presentation of the match. The 12 seconds rule particularly applies to players not delaying the time between rallies by altering lines, excessive communication to their partner, use of towels, wiping of glasses etc.

Note: Players should generally proceed directly to serve, but if they wish to use a towel, wipe glasses, etc must do so immediately at the end of the rally so that they will start getting ready to serve/receive at around 8 seconds at the limit.

Note: The FIRST REFEREE should initially, in the case of small delays between rallies, give verbal warnings (indicating teams to return to commence play), but a pattern of continued delays must be sanctioned.

3. REFEREES must reject any attempt from team Captains to discuss decisions involving playing actions or misconduct.

Note: In case players insist, the FIRST REFEREE shall immediately sanction the team for delay.

4. When explaining their interpretation and/ or application of a rule to a team Captain, REFEREES should be clear and concise, use correct English Technical Terminology which may as appropriate be accompanied by hand signals.

Note: No further delays shall be permitted and the players shall be requested to continue the match immediately. In case they disagree with the explanation they have however the right to initiate a Protest Protocol, which they must do immediately.

5. The first delay by a team member in the match is sanctioned with a Delay Warning.

Note: before the start of any eventual following set(s), after the SCORER has completed the score sheet with the relevant information passed by the SECOND REFEREE, he/she must ensure that the SCORER then crosses off the WARN box at the DELAY SANCTIONS section for that team in that set.

6. The second and subsequent delays of any type by any member of the same team in the match will be sanctioned with a Delay Penalty.

Note: the SECOND REFEREE must inform the FIRST REFEREE in case a Delay Warning has been already issued to that team.

7. Rule 15.11.2 states "The first improper request by a team in the match that does not affect or delay the game shall be rejected without any other consequences".

Note: There is nothing in the rule statement about the previous events before the improper request. If a request is improper for the first time by a team, it should be considered as an "improper request"; it doesn't matter, if previously the team received a delay sanction. So, after DW or DP, an "improper request" may still be committed – and recorded in the score sheet.

17. EXCEPTIONAL GAME INTERRUPTIONS

1. Under rule 17.1 of the Official Beach Volleyball Rules, if a serious accident occurs during the rally and a player is bleeding or he/she may aggravate his/her condition if play continues, the Referee must blow the whistle immediately to stop play. The rally is then replayed.

2. Upon a player becoming injured/ill, as soon as the rally is finished the 2nd referee must check if the player requires medical assistance.

a) If the player is bleeding and the bleeding is minor and can be stopped easily, this must be treated with no delay, without any need for a "medical time out" to be implemented. If the bleeding is more significant it should be treated as requiring medical assistance. In this case, if the team has an available time out, or the play that just finished lead to a technical time out or to the set interval, then treatment can be provided with no delay to the game. Otherwise, the 1st referee shall initiate a "medical time out"

(refer to "Medical Time Out" protocol (MTO), pages 29 and 30).

b) In case the injury/illness involves no bleeding and is minor and can be easily resolved, this must be treated with no delay, without any need for a medical assistance to be involved. Yet if medical assistance is required, and the team has an available timeout, or the play that just finished lead to a technical time out or to the set interval, then treatment can be provided with

no delay to the game. Otherwise injuries/illness exclusively in relation to cases of: significant injury caused by a trauma incident during the course of the game; illness in relation to severe weather conditions officially declared; or use of toilets shall be treated as a “Recovery Interruption” and resolved with the minimum possible delay after initiated by the 1st referee, with the recovery time not taking longer than absolutely necessary (e.g. taping).

(refer to “Recovery Interruption” protocol (RIT), pages 29 to 34).

3. Referees should be aware of the circumstances leading up to the injury/illness as they are responsible to establish its nature (if blood, or traumatic, or weather condition related) and extent (if minor or significant) before they decide to initiate the relevant procedure.

4. The injured/ill player has the right to choose the medical assistance from among the official medical personnel assigned on site, or from the properly accredited team’s medical personnel.

5. Under all circumstances above, the official medical personnel shall be requested to come to the court as it will be their responsibility to supervise the treatment and report to the 1st referee when this has been completed, unless the player declares her/himself ready to resume play before their arrival at the court area. A “MTO” or a “RIT” as applicable shall be in any case assigned to that player.

6. When treatment has been completed or if no treatment can be provided in that short time period, play must resume or the relevant team is declared incomplete for the set or the match, as applicable.

7. Unless for bleeding cases (refer to “Medical Time Out” protocol (MTO), at pages 29 and 30), the decision whether a player is medically fit or not to resume after an injury/illness depends entirely upon the player. Even if the official medical personnel advise the player not to continue, the final decision of whether to resume or not rests with the player. This condition is covered in the signed “Players Commitment”. However, in extreme cases, the doctor of the competition can oppose the return of an injured/ill player.



8. In the first case above, the referees shall record at the “remarks section” of the score sheet that the player specifically requested to continue the match against medical advice from the official medical personnel. The relevant post-match signature by the captain will verify this statement.

9. The duration of the medical assistance shall be electronically timed from the moment the scorer hits the relevant button at the e-scoresheet, with the timer being displayed at the litescore. The timing shall start from the whistle of the 1st referee after he/she authorizes the “MTO” or the “RIT”, ending when the litescore buzzer signals the end of the maximum authorized 5 minutes, or at the whistle of the 1st referee immediately after treatment is declared complete by the official medical personnel, or if no treatment can be provided, or when the player declares that he/she is ready to resume play.

Note: *In case no e-scoresheet being applied, the medical assistance shall be manually timed by the official scorer.*

10. It is possible for the same player to undergo “Medical Time Out” with “Recovery Interruption” in the same match. (refer to “Medical Assistance” protocols, pages 28 to 34).

11. Medical assistance may in any case be provided to players at regular game interruptions (TO, TTO, set intervals) with no delay to the game.

12. In the case a player delays the normal sequence of the game while using the toilets, a “Recovery Interruption” will be assigned to that player with the match resuming as soon as the player is back to the court.

Note: *Organizers are required to supply 2 dedicated athletes’ toilets (one for the women and one for the men) - portable if it is not possible to use an existing facility - within a range of maximum 100 metres from any of the competition courts. Referees are required to report this aspect at their homologation court checking prior to the start of the tournament.*

13. To be able to provide quick treatment during matches, medical personnel must be seated in the immediate courtside area during matches.

Note: *Official medical personnel (first aid, physician and physical therapist) are required at courtside area at all court locations, allowing quick and qualified response to athlete’s medical assistance during the games.*

14. For any cases of medical related forfeit (unless for cases of blood injury or traumatic injury), the 1st referee will try to establish if this is due to heat exhaustion and/or dehydration. If this is the case, the

injured/ill player shall be asked “Have you suffered from vomiting and/or diarrhea during the past five days?” This information is then reported to the Referee Coach for the relevant purposes (BVB-45 Heat Stress Monitoring Results).

15. Any time a forfeit due to injury/illness occurs, including before the match starts, official medical personnel and the FIVB Medical Delegate (if one is appointed to the event) must be present.

16. In the case of an athlete being assigned a “Recovery Interruption” or forfeiting a match due to an alleged injury/illness, immediately following the relevant score sheet administration he/she will be given a copy of the BVB/49 form by the match referees. The follow up of the concerned procedure is the responsibility of the injured/ill player. (refer to FIVB Beach Volleyball Sports Regulations).

Note: At FIVB World and Official Competitions, a maximum of two “Recovery Interruption” due to illness in relation to Severe Weather conditions, or use of toilet are allowed per athlete within a rolling 12-month period. (refer to FIVB Beach Volleyball Sports Regulations).

17. The FIVB Technical Delegate, with basis on the WBGT index and in consultation with the Official Medical Doctor of the tournament or the FIVB Medical Delegate (if present) and the FIVB Referee Coach may apply exceptional measures such as:

- To increase the time between rallies from 12 sec to 15 sec; and if necessary
- To permit quick water breaks at the side changes
- To assign an extra technical time-out when the sum of points scored by the teams equals 42 points

When any of the measures above is applied, the tournament is officially considered under severe weather conditions.

Note: Only when a tournament is officially declared under Severe Weather conditions, the 1st referee may authorize “Recovery Interruption” due to an athlete suspected illness in relation to severe weather conditions.

18. The FIVB Technical Delegate in consultation with the Organizing Committee can also decide interrupting a match/ tournament if temperatures, light or weather conditions present a danger to players or do not enable normal playing conditions to be maintained.

19. The 1st referee has the responsibility to judge all areas of external interference including members of the auxiliary corps, spectators and other objects / persons (Rules 17.2.and 17.3).

18. INTERVALS AND COURT SWITCHES

1. In RPS, after every 7 points played, the teams switch courts immediately (5 points in set 3). If the teams fail to switch at a multiple of 7 (5 in set 3), they must switch at the earliest possible moment when the ball is out of play. There is no fault or deduction of points and play continues as if the teams switched at the correct time.

Note: The points are recorded on the scoresheet in the Court Switch Box as the actual score, even though it is not a multiple of 7 (or 5 in set 3).

2. An interval is the time between sets.

Note: During set intervals, players must go to the designated player’s areas.

3. There is no interval during switch of courts. Teams must switch courts immediately but not before being whistled for court switch by the REFEREE.

Note: In case the REFEREE purposely pauses before whistling for the court switch and a player switches court before the whistle, his/ her team will be sanctioned for delay. However, REFEREES must maintain a constant pace between rallies, and also at side switches.

4. Intervals last 1 minute. During the interval between the second and the deciding set the FIRST REFEREE, carries out a new coin toss (Rule 7.1).

Note: In the interval between sets 1 and 2 the FIRST REFEREE should stay on the REFEREES chair.

5. If applicable, the SECOND REFEREE can conduct the toss between sets 2 and 3 (Rule 23.2.9).

19. REQUIREMENTS OF CONDUCT

1. It is the responsibility of the participants to know the official Beach Volleyball rules and abide by them.

2. Participants must refrain from actions or attitudes aimed at influencing the decisions of the REFEREES or covering up faults committed by their team (Rule 19.1.3).

Note: This includes intentionally covering up a ball mark in the sand after REFEREES have blown the whistle to stop the game (see 8.4.4). Also, in case a player “calls a fault” during play, thus trying to influence the REFEREES, the player shall be subject to the appropriate warning / sanction, depending on the circumstances.

3. REFEREES are not policemen but conductors of the match. Normal reactions and emotional responses to decisions do not necessarily show disrespect to the officials' decisions. REFEREES must judge these emotional responses in the context of maintaining an appropriate level of demeanour, presentation of the match (spectator's appeal of the game) and equity in penalties applied. It is nevertheless also very important to remember that according to Rule 19.2 participants must behave respectfully and courteously not only towards the referees, but also towards other officials, their teammate, the opponents and spectators.

Note: REFEREES must penalise more actively cases of misconduct that are clearly not normal acceptable communications between an official and a player. This would include gestures, tone of voice, abuse of equipment (esp. ball and net) and protracted discussions with officials. If required, REFEREES are empowered to utilise the penalisation of Rude Conduct (red card) without prior warning.

Note: Cases of players excessively abusing match equipment are considered Rude Conduct.

Note: For FIVB, World and Official Competitions, a sanction fee is applied whenever, equipment abuse or officials and on court personnel abuse by players leads to a penalty or higher sanction by the referee. Please refer to the "FIVB misconduct sanction fee scale – implementation guidelines".

20. MISCONDUCT AND ITS SANCTIONS

1. It is important that REFEREES understand the misconduct sanction scale and apply the rules correctly (Rule 20). This is especially important in RPS as misconduct or delay penalties may lead to complex applications of the rules and their resultant effect on the score sheet.



2. Rule 20.1 deals with "minor misconduct" which is not subject to sanctions. It is the FIRST REFEREE's duty to prevent the teams from approaching the sanctioning level, which can be done in two stages: The first stage by issuing a verbal warning through the team captain (either for individual or collective reaction). No cards, no registration on the score sheet. The second stage by a Formal Warning through the use of a yellow card shown to the relevant player (could be again for a collective reaction and in this case the card should be shown to the captain). This Formal Warning is not a sanction but a symbol that the team member (and by extension the team) has reached the sanctioning level for the match. It has no immediate consequences, but is recorded on the score sheet.

Note: If for any reason the FIRST REFEREE would have gone directly to the sanctioning level (i.e.: a player being penalized for rude conduct due to having crossed the net to review a ball mark) then

that team would have reached the sanctioning level for the rest of the match. Accordingly, after a Formal Warning or any misconduct sanction being recorded on the score sheet, the SECOND REFEREE must ensure that the SCORER then crosses off any "Formal Warn" box(s) left open for that team in that set. The same procedure applies before the start of other eventual sets that may follow.

3. Rule 20.2 deals with "misconduct leading to sanctions". According to this rule, rude, offensive and aggressive behavior is seriously sanctioned. They are applied and recorded on the score sheet according to a scale.

4. Misconduct sanctions are cumulative only within an individual set. A player may however receive up to two red cards for rude conduct in an individual set (Rule 20.3.1).

Note: Rude conduct, Offensive conduct and Aggression do not require prior sanction.

Note: It is very important that respectively the SCORER and the REFEREES accurately record and follow the sequence of any minor misconduct which occurred in the match and any misconduct sanctions occurred in the set, in order to duly enforce the respective consequences in case of repetition respectively in the same match or set (see points 2 to 4 above).

Note: In order to deliver a sanction, the offending player should be called to the FIRST REFEREE'S stand.

5. A player who crosses the net to review a ball mark shall be penalized by the FIRST REFEREE for "Rude conduct".

Note: REFEREES must also pay particular attention to deliberate kicking of a ball at the completion of a rally. REFEREES must clearly distinguish between the various offences (and appropriately sanction,) taking into account circumstances such as intent, degree of premeditation and strength of players action.

21. REFEREEING CORPS AND PROCEDURES

1. It is very important that the REFEREES signal the end of a rally only if the following two conditions are fulfilled:

- 1.1. They are sure that a fault has been committed or there is an external interference; and
- 1.2. They have identified its nature.

2. To inform the teams exactly of the nature of the fault whistled by the REFEREES (for the public, TV viewers, etc.), the REFEREES must use the official hand signals (see Rules 21.2 and 27.1). Only these hand signals and no others (national or private hand signals or manner of execution) can be used!

3. According to the Rules of the Game, the first fault to occur must be penalised. The fact that the FIRST and the SECOND REFEREES have different areas of responsibility makes it very important that each REFEREE whistles the fault immediately. On the whistle of one of the REFEREES, the rally ends (see Rule 8.2 – Ball out of play). After a whistle by the FIRST REFEREE, the SECOND REFEREE has no further right to blow his/her whistle, because the rally ends with the first whistle of the REFEREES. If the two REFEREES blow their whistles one after the other – for different faults – they cause confusion for the players, public, etc.

4. Due to the speeding up of the game, problems may arise showing refereeing errors. To prevent this, the Refereeing corps must collaborate very closely; after each playing action they should glance at one another to confirm their decision. Good communication and co-operation between REFEREES is vital. A good team is constantly communicating and showing support for each other's decision. This attitude builds confidence in the officiating team and promotes a truly professional performance.



22. FIRST REFEREE

1. REFEREES must always cooperate with their fellow officials. They should allow them work within their area of responsibility and respect their decisions. However, if they feel that an official is in error, they have the authority to correct the call. If an official cannot perform to the required level, the FIRST REFEREE has the authority to replace this official.

2. Many problems can be prevented by good communication with all officials before and during the match.

Note: *This especially applies to the ball mark protocol, protests and four hits.*

Note: *This additionally applies when the match officials are unsure of the abilities of their auxiliary corps.*

3. It is important for REFEREES to have all their equipment to conduct the match:

- a) Personal set of red and yellow cards

Note: *REFEREES must remember that not all tournaments provide a set of cards on all courts attached to the post in front of the FIRST REFEREE'S chair.*

- b) Coin to conduct the coin toss

- c) Whistle

Note: *It is a good idea for both REFEREES to have always an extra one.*

- d) A watch that displays seconds and that it is set to the correct time.



4. REFEREES must be in excellent physical and mental health. REFEREES should prepare themselves to be ready to officiate and rest, take food / liquids when appropriate during the days play.

5. REFEREES must take responsibility for their decisions and the decisions of their fellow officials.

Note: *FIRST REFEREES can ask fellow officials to repeat their signals or to explain their decisions.*

6. The FIRST REFEREE must accept protests (if requested correctly under the rules / regulations).

Note: *For FIVB, World and Official Competitions, the FIRST REFEREE must carefully implement the "FIVB Protest Protocol" especially noting the FIRST REFEREE'S duties prior to the commencement of a Protest Protocol (see Protest Protocol page 35).*

7. The FIRST REFEREE must control the conduct / actions of all match officials after the completion of the match, ensuring a smooth transition to the next match with a minimum of interaction with all participants.

8. In cases where matches are to be televised / filmed, all match officials must interact with the appropriate TV / film staff especially concentrating on complying with FIVB regulations and the replay protocol.

Note: For FIVB, World and Official Competitions, the host broadcaster can ask for a 'replay delay', if the necessary installations are made and agreed by the Organising Committee and the relevant FIVB Delegates. The necessary installation consists either of an earpiece or a floor manager linking the FIRST REFEREE to the host broadcaster representative, signalling for an instant replay of a previous action. At the voice "TV stop" or the "red paddle", the FIRST REFEREE holds the start of the next rally by extending his/her arm on the side of the receiving team with the palm of the hand facing forward and the fingers pointing upwards. At the voice "TV go" or the "green paddle", the FIRST REFEREE immediately dismisses the previous signal and initiates the signal and whistle for service.

9. For FIVB, World and Official Competitions (mandatory at the Centre Court for the FIVB World Championships and all World Tour 5 star tournaments, being also implemented at the 4 star events whenever agreed by the relevant parties) the FIRST REFEREE is provided with a wireless lapel microphone equipped with a switch on/ off button allowing him/ her to clarify for the spectators their decisions. The aim is to clarify the implementation of the Rules of the Game and allow the audience to better understand and identify any controversial or relevant decisions. For further guidance, please refer to the "First Referee Verbal Communication with the Audience Protocol" (see page 40).

23. SECOND REFEREE

1. SECOND REFEREES must be of the same competence as the FIRST REFEREE. If for some reason the FIRST REFEREE is unable to continue working, the SECOND REFEREE may have to take their place as FIRST REFEREE.

2. Good communication and cooperation with the FIRST REFEREE is mandatory. If for some reason, the SECOND REFEREE disagrees with the FIRST REFEREE's decision they must not show this to the players and spectators but must continue officiating and show support for the FIRST REFEREE'S decision.

Note: The positional work of the SECOND REFEREE is important in being able to communicate / collaborate with the FIRST REFEREE.

3. The SECOND REFEREE is responsible for having the same equipment as the FIRST REFEREE (even the personal set of red and yellow cards). As SECOND REFEREE, they do not have the authority to sanction players, but if for some reason they have to take over the duties of the FIRST REFEREE, they must be prepared with all necessary personal equipment.

Note: Relevance to carrying a coin to conduct the coin toss in case applicable.

4. The SECOND REFEREE should supervise the work of the SCORERS, making sure that they have completed their work before allowing play to commence. Again good communication is essential between these officials.

Note: At all times the SECOND REFEREE is expected to know the correct score. There are several different techniques that can be utilized in RPS for the score to be kept by the SECOND REFEREE.

5. During the exchange of play near the net, the SECOND REFEREE must concentrate on controlling the illegal touch of the whole net on the blocker's side and on all illegal penetrations under the net.

Note: Attention must be paid to the change of the rule concerning the touch of the net by a player.

6. The SECOND REFEREE'S duties and rights are clearly stipulated and REFEREES should study well the "responsibilities" of the SECOND REFEREE. We draw attention to the new duties that have added to the work of the SECOND REFEREE, with emphasis to being responsible for:

6.1. Checking the height of the net before the coin toss;

6.2. The four (4) match balls before, during and after the match, including coordinating the process of replacement of the four (4) match balls between sets in case the match balls get excessively heavy due to rainy conditions;

6.3. Monitoring that water is always available for the players throughout the match.

7. Concerning new responsibilities, the SECOND REFEREE must also "decide, whistle and signal the faults" during the match (See Rule 23.3.2):

7.1. The contact of the ball with the sand when the FIRST REFEREE is not in position to see the contact;

7.2. The ball recovered completely on the opponent's side under the net;



- 7.3. Conduct the toss between sets 2 and 3, if applicable. He/she then must pass all relevant information to the SCORER (Rule 23.2.9) and the FIRST REFEREE;
- 7.4. Check and sign the score sheet at the end of the match.
8. For FIVB, World and Official Competitions, a RESERVE REFEREE will be assigned for all TV matches, plus all Semi-Finals and Finals. The RESERVE REFEREE replaces the SECOND REFEREE in case of absence or in case that he/she is unable to continue his/her work or in case that the SECOND REFEREE became FIRST REFEREE.
9. In addition to the above, the following duties originally assigned to the SECOND REFEREE, are carried out by the RESERVE REFEREE:
- 9.1. Check before the match and monitor throughout the match, that water is always available for the players and the match OFFICIALS;
- 9.2. Take possession of the four (4) match balls before the match, and check that all of them have identical characteristics (colour, circumference, weight and pressure) and then monitoring them throughout the match, and when required and applicable assisting collecting the balls from the court or returning the balls to the court through the SECOND REFEREE;
- 9.3. Take possession of a reserve set of four (4) balls that must be available in case of rainy conditions. In case the match balls get excessively heavy, the RESERVE REFEREE is responsible to coordinate the process of replacement of the four (4) match balls between sets;
- 9.4. Accompany any player that requests to use the toilet before or during the match;
- 9.5. Assist the SECOND REFEREE in calling any Official that may be required on the court (Court Manager; Official medical personnel; FIVB Medical Delegate; FIVB Referee Coach; FIVB Technical Delegate, etc);
- 9.6. Assist the SECOND REFEREE monitoring the safety conditions of the free zone during the match;
- 9.7. Assist the SECOND REFEREE with guiding the work of the sand levellers.

24. SCORER

1. The SCORER is expected to be near the playing court at least fifteen minutes before the scheduled start of the match. The first and second REFEREES will meet with them at this time.
- Note:** For FIVB, World and Official Competitions a random alcohol test will apply. In case being selected the SCORER must be present at the alcohol test room, in uniform, 45 minutes before the match start time.
2. The work of the SCORER is very important, particularly during international matches, where the members of the refereeing corps and of the teams are from different countries. They must work closely with the SECOND REFEREE, and if for some reason the SCORER is not ready to commence, they must make sure, the SECOND REFEREE is immediately informed of this. The SECOND REFEREE should not allow play to start until the scorer has finished their work.
- Note:** Before a set being initiated; after a TO or a TTO; after an exceptional game interruption; and anytime they have requested extra time to complete their work, the SCORER should raise both hands and inform his/her readiness, which will be then communicated by the SECOND REFEREE to the FIRST REFEREE by the use of the same signal.
3. The SCORER should inform the SECOND REFEREE if they need signatures or any other information for the scoresheet that has not yet been specially provided.
- Note:** Rally Point Scoring places a lot of pressure on scorers to complete their recording of each rally and resultant points. If for any reason the SCORER falls behind in their scoring they should immediately inform the referees.
- Note:** This applies before the match regarding the serving team, service order and court side, and at the end of the match for the captain's post match signatures.
4. New misconduct and delay sanction scales will be implemented from 2013 and onwards. It is very important that the SCORERS are fully aware of these new rules and its implications in the procedures for filling in the score sheet. (refer to the "FIVB Score sheet Instructions").
- Note:** the SCORER must remind the SECOND REFEREE any time:
- a team has exhausted their first and only "Formal Warning" in the match;
 - a given player has been sanctioned already once, or twice, for "Rude conduct" in that same set;
 - a given player has been sanctioned already once for "Offensive conduct" in that same match;
 - a "Delay warning" has been already issued to that team in the match.
5. Pool play system also places a lot of pressure on SCORERS to complete their recordings of final results at the scoresheet, as one single added or subtracted point at a given match in the pool will have an effect on the points ratio which can change the standings of the teams in the pool jeopardizing their chances to qualify for the next round of the tournament.
- Note:** SCORERS must very carefully check all relevant boxes/sections of the scoresheet (e.g.: service order boxes; team points row) while filling out the Results box. For further guidance on how to fill in the

scoresheet, please refer to the “FIVB Scoresheet Instructions” (FIVB Beach Volleyball Refereeing Coach’s Manual - Appendix 2).

25. ASSISTANT SCORER

1. The ASSISTANT SCORER is expected to be near the playing court at least fifteen minutes before the scheduled start of the match. The first and second REFEREES will meet with them at this time.

Note: For FIVB, World and Official Competitions a random alcohol test will apply. In case being selected the ASSISTANT SCORER must be present at the alcohol test room, in uniform, 45 minutes before the match start time.

2. The ASSISTANT SCORER must be of the same competence as the SCORER and work in close coordination with him/her. If for some reason the scorer is unable to continue working he/she will take over the respective functions.

3. The ASSISTANT SCORER sits besides the SCORER, being responsible for the following duties:

- a) operates the manual scoreboard on the SCORER’s table, checking that all scoreboards at the stadium show the correct results to the audience and, if not, corrects it;
- b) operates the number paddles 1 and 2 for indicating the correct server in coordination with the SCORER. He/she must every time follow the verbal information received from the SCORER;
- c) starts and ends the timing of the Technical Time Outs with the use of the buzzer/bell, in case applicable. He/she can be replaced by the SECOND REFEREE in this action if no buzzer/bell is available.

Note: He/she should continue to hold the paddle up until the service takes place.

Note: It is of good technique that the ASSISTANT SCORER follows an individual control sheet that he/she every time checks against the information received from the SCORER.

6. If the wrong server is moving towards the service zone or is in possession of the ball to serve, the ASSISTANT SCORER must inform the SECOND REFEREE and player(s) to correct the error.

7. If the wrong server contacts the ball, the ASSISTANT SCORER should sound a buzzer / bell (or other equipment supplied) to indicate a serving order fault has occurred.

26. LINEJUDGES



1. LINEJUDGES are expected to be near the playing court at least fifteen minutes before the scheduled start of the match. The FIRST and SECOND REFEREES will meet with them at this time.

Note: For FIVB, World and Official Competitions a random alcohol test will apply. In case of being selected the LINEJUDGES must be present at the alcohol test room, in uniform, 45 minutes before the match start time.

2. The organisers must provide each LINEJUDGE with uniform, flag, and a small towel. The colour of the flags should be red or yellow.

3. The LINEJUDGE’s work is very important, especially during high level international matches. In addition to calling “ball in” or “out”, as well as other faults they are responsible for,

LINEJUDGES must pay close attention to the touch by the block, because this counts as a first team hit. LINEJUDGES must always indicate to the REFEREES by the use of a flag signal a block touch during the rally (for a possible four hit fault).

4. Faults should be signalled clearly, to ensure beyond any doubt that the FIRST REFEREE sees them.

5. If the ball touches the antenna, crosses over it, or flies outside it into the opponent’s court, the LINEJUDGE closest to the direction of the ball, must signal the fault.

6. For any contact with the top 80cm of the antenna by any player during his/her action of playing the ball or interfering with the play, the LINEJUDGE on the side of the court of the player committing the fault, must signal.

5. The LINEJUDGE must understand clearly the definition of the ball out (i.e. when passing completely outside or over the antennae to the opponent court) and understand its various consequences in their signalling (when to signal, appropriate signal for each circumstance etc). There are many different circumstances that may occur.

6. A LINEJUDGE may be asked to participate in a ball mark protocol. The LINEJUDGE must indicate correctly the ball mark in the sand and any other facts as requested by the REFEREES.

27. OFFICIAL SIGNALS

1. It is mandatory that Officials use the official signals according to the correct application of the rules and following diagrams 9 and 10 (respectively 1-25; and 1-5).

Note: *The use of any other signals should be avoided, but in any case, they should be used only when it is absolutely necessary to be understood by the team members.*

2. Where no other official hand signal can clearly be used, REFEREES may point to the object to clarify the decision. For example foot faults, serving outside the extension of the sideline and assisted hit.

3. Officials must be clear and precise in the administration of the sequence of whistle and hand signals. Signals are separate and should follow the same order each time they are made.

4. The exception to 2. above is the authorisation for service as the FIRST REFEREE whistles and shows the signal simultaneously.

5. In the case of the FIRST REFEREE making the call, after the whistle he/she must then indicate in order:

- a) The team to serve,
- b) The nature of the fault by using the official hand signal,
- c) The player(s) at fault (if necessary).

Note: *The SECOND REFEREE will not follow the FIRST REFEREE's hand signals.*

6. In the case of the SECOND REFEREE making the call, after the whistle he/she must then indicate:

- a) The nature of the fault by the official hand signal on the side where the fault was committed,
- b) The player at fault (if necessary),
- c) The team to serve following the hand signal of the FIRST REFEREE.

Note: *In this case, the FIRST REFEREE does not show either the nature of the fault or the player at fault, but only the team to serve.*

Note: *When the SECOND REFEREE whistles for a fault (e.g. touch of the net by a player) he/she must be careful to show the hand signal on the side where the fault was committed (Rule 27.1). For example: if a player from the team that is on his/her right has touched the net, and he/she whistles this fault, the hand signals should not be shown through the net from the other team's side, but the REFEREE should move, so that the hand signal is indicated on the side of the fault.*

Note: *When the SECOND REFEREE signals for switch, there is no "mirror" by the FIRST REFEREE. However, if the SECOND REFEREE misses whistling and signalling for switch, then the FIRST REFEREE can do it. In this case the no "mirror" instruction as it relates to the SECOND REFEREE applies.*

Note: *TO, and TTO shall be whistled and signalled by the SECOND REFEREE. No "mirror" by the FIRST REFEREE applies. However, if the SECOND REFEREE misses whistling and signalling for TO, the same principle as above will apply. The end of set and the end of match shall be whistled and signalled by the FIRST REFEREE. No "mirror" by the SECOND REFEREE applies.*

Note: *The SECOND REFEREE retains the ability to assist the FIRST REFEREE with against-the-chest mid-rally or end-of-rally signalling.*

7. In the case of a double fault both REFEREES should, after whistling, indicate in order:

- a) The team to serve,
- b) The nature of the fault,
- c) The team to serve is then indicated by the FIRST REFEREE.

Note: *For cases of replay, such as for a service executed before the whistle only the FIRST REFEREE signals replay; In the case of a ball coming inside the court during the rally and interrupting the game being whistled by the SECOND REFEREE for external interference, he/she should then signal replay followed by the FIRST REFEREE indicating the team to serve, and the SECOND REFEREE copying.*

8. The REFEREES and LINEJUDGES should pay attention to the correct application and use of the hand/flag signal:

- a) For all balls that land "directly out" after an attack or a block by the opposing team, the hand/flag signal of "ball out" (number 15 / LJ 2) must be used.
- b) If a ball from an attack hit crosses the net and touches the ground outside the playing court, but a blocker or other player of the receiving team touches it, the officials must show only the signal/flag signal "ball touched" (number 24 / LJ 3)



c) If a ball, after a team has played it with the first, second or third touch, is out on its side, the officials must use the “ball touched” hand/flag signal (number 24 / LJ 3)

d) If after an attack hit the ball is smashed into the top of the net and after that it lands “out” on the attacker’s side without touching the opponent’s block, the REFEREES must show “ball out” (number 15) but immediately after it the attacking player must be indicated (so that everybody understands that the ball was not touched by the blockers). If, in the same case, the ball touches the block and afterwards flies out on the attacker’s side, the FIRST REFEREE must show the hand signal “ball out” (number 15) and indicate the blocker(s).

Note: The LINEJUDGE’s flag signals are also very important from the point of view of the participants and public. The FIRST REFEREE must check that the LINEJUDGE’S flag signals are correct. If they are not properly done, he/she may correct them.



PROTOCOLS

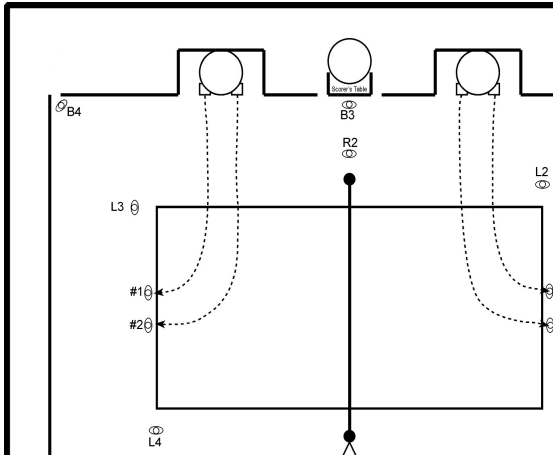
The designation “relevant FIVB Delegate(s)” has been used in all protocols to apply to Technical Delegate and Refereeing Coach. Their specific roles are defined at the FIVB Beach Volleyball Handbook.

OFFICIAL MATCH PROTOCOL

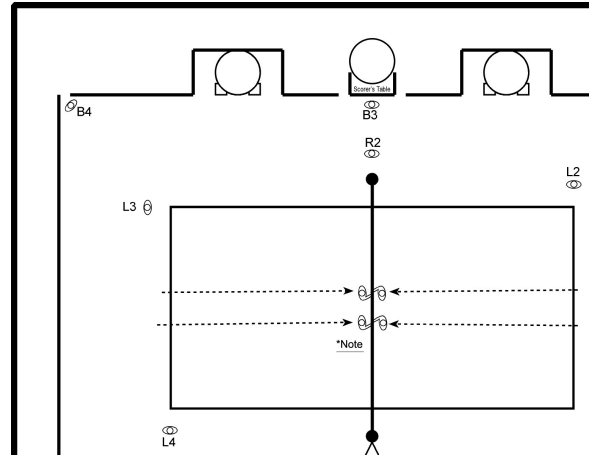
-10 min.	Previous match finishes, referees to complete post match formalities and exit court area.
-8 min.	Announcement of match as soon as court is prepared by the sand levellers, players and officials enter the court area. Players from this time must be in official match uniforms. Watering and raking should be complete by this time. Players warm up on court area and other preparations, officials check match equipment, score sheet, conditions, players area, etc.
-5 min.	Coin toss taken in front of scorer's table. <i>(Note: If local conditions dictate, the coin toss time can be moved forward to allow extra warm up time).</i>
-4 min.	Beginning of official warm up period (3 min.)
-1 min	End of official warm up period, players to leave the court area to their respective player's area. First referee to the referee's chair, second referee to position standing in front of the scorer's table, all other officials take their positions. Individual player's announcement and entry onto the rear of the playing court (Fig 1). After last player's entry to rear of court, the first referee whistles and players shake hands under the net (Fig 2).
0 min	Commencement of the match.
End of match	Players shake hands with their opponents and referees near the first referee's chair and proceed across the court to the scorer's table (Fig 3). The score sheet is signed by the captains. All participants gather their belongings, and the referees lead the teams to exit the court so that it can be prepared for the next match.

Notes:

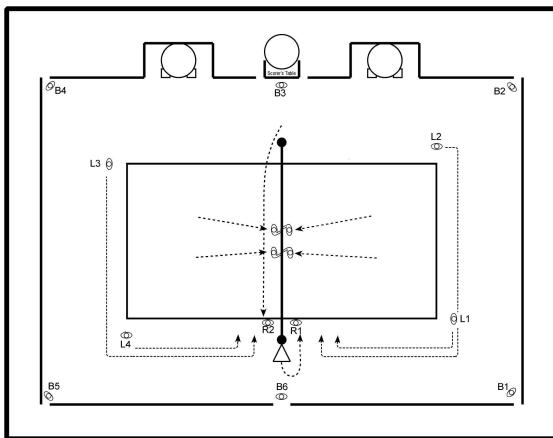
- This protocol may be altered from **3 min** to **5 min official warm up time** by altering the toss to (-7 min).
- This protocol may be further adapted for particular Television coverage or requirements if necessary.
- It is not necessary to excessively delay the exit from the court by waiting for the referees to sign the score sheet. This can be done outside the court area.
- Coin toss can be taken off the court if required to speed up protocol.
- In cases where the length of the warm-up is extended, by FIVB Officials, all officials should enter the court 10 min before the match and proceed with the protocol above from 8 min onwards.
- Coaches are allowed in the court during respective team's warm-up until the start of the official match protocol. Where applicable, upon confirmation by the Referee Coach it is possible for the team coaches to stay until immediately before the start of the coin toss.



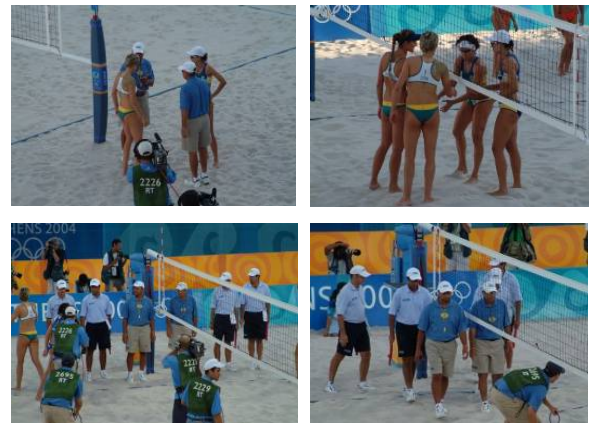
Match Protocol Fig 1



Match Protocol Fig 2



Match Protocol Fig 3



Coin Toss and Match Protocol

FORFEIT AND DEFAULT PROTOCOL

The aim of this section is to provide REFEREES with a standardised method by which to deal with the situation of a forfeit. The forfeit by its nature is a difficult situation as not only can it potentially finish a match but it can easily result in a protest situation if the process is not followed exactly. Therefore, officials should pay attention that the processes outlined below are followed exactly, and that all pertinent information is recorded and communicated appropriately to anyone affected by the protocol.

1. RELEVANT RULES

- The rules governing forfeits / defaults are primarily covered in two sections with the Official Beach Volleyball Rules: Rules 6.4 and 7.1

Rule 6.4 Defaults and Incomplete Team:

Rule 6.4.1 If a team refuses to play after being summoned to do so, it is declared in default and forfeits the match with the result 0-2 for the match and 0-21, 0-21 for each set.

Rule 6.4.2 A team that does not appear on the playing court on time is declared in default. 6.4.1 above

Rule 6.4.3 A team that is declared INCOMPLETE for the set or for the match, loses the set or the match. The opponent team is given the points, or the points and the sets, needed to win the set or the match. The incomplete team keeps its points and sets. (Rules 6.2, 6.3, 7.3.1)

“For FIVB, World and Official Competitions whenever Pool Play format is implemented, Rule 6.4 above may be subject to modifications as stated in the Specific Competition Regulations issued by the FIVB in due time, establishing the modality to be followed for treating the default and incomplete team cases”

Rule 7.1 The Toss:

Before the official warm up, the FIRST REFEREE conducts the toss to decide upon the first service and the sides of the court in the first set.

2. POSSIBLE SCENARIOS

- **Based on the above rules there are three basic scenarios that are possible:**
- Scenario 1: A team formally forfeits the match prior to the commencement of the match
- Scenario 2: A team forfeits the match because it was not present at the correct time in order to commence the match
- Scenario 3: A team forfeits the match after the match has commenced.

3. SCENARIO 1: A TEAM FORMALLY FORFEITS THE MATCH PRIOR TO ITS COMMENCEMENT

- This situation is controlled by the relevant FIVB Delegate(s) and has little impact on a REFEREE.
- A REFEREE must complete the score sheet (if requested by the FIVB Delegate) in accordance with the FIVB Scoring Instructions
- REFEREES must ensure that they are aware of any changes to the match schedule as a result of the forfeit.

4. SCENARIO 2: A TEAM FORFEITS THE MATCH BECAUSE IT WAS NOT PRESENT AT THE CORRECT TIME IN ORDER TO COMMENCE A MATCH

Essential Steps (proceed to the next step if not resolved)

1. Verify that the teams are present
2. Attempt to find the teams
3. Inform the relevant FIVB Delegate(s)
4. Continue the Match Protocol
5. Official warm up time after coin toss
6. Final forfeit decision

Overview

- The REFEREES in this situation must act quickly as time is very important
- The REFEREES through their actions must try not to advantage one team over another
- The REFEREE(S) should at no time make comments to the player(s) on the likely outcome / probability of a forfeit occurring
- REFEREES should not assume that a team will not be present based on a previous forfeit by the team

Specific Notes for each step

Step 1

- As soon as a REFEREE is present before the match they must verify that both teams (both players) are present
- The REFEREE must be present before the commencement of the official warm up time.

Step 2

- If one or both are not present they should take all actions appropriate to immediately verify the team's whereabouts. This includes use of Court Managers, Walkie-talkies and the SECOND REFEREE leaving the court area, to make sure that the information is appropriately conveyed to the relevant FIVB Delegate(s) and Tournament staff.
- The FIRST REFEREE should stay at the court

Step 3

- If the situation is not immediately resolvable by the team coming to the court the relevant FIVB Delegate must be informed and requested to come to the court
- Once the FIVB Technical Delegate is present at the court the final decision on all areas such as commencing the Match Protocol and forfeits is theirs to make. The REFEREES should continue (or proceed with) the Official Match Protocol for the tournament
- The relevant FIVB Delegate(s) will try to ascertain the reason for the player(s) absence and advise the REFEREES actions accordingly
- Ideally the relevant FIVB Delegate(s) should be present before the commencement of the Official Match Protocol. If not the REFEREE must take control of the situation but must note that only the FIVB Technical Delegate can make a final decision whether to forfeit a team.

Step 4

- If the relevant FIVB Delegate(s) is not present they should automatically commence / continue the Official Match Protocol (unless otherwise requested by the FIVB Delegate)
- The REFEREES once the Official Match Protocol has commenced take all steps to continue this protocol without alteration (i.e. the protocol is maintained)

Step 5

- The REFEREE should at the correct time under the Official Match Schedule request (to the relevant FIVB Delegate(s)) that they should commence the official warm up period, starting with the coin toss (unless otherwise notified).
- Special Protocol 1: If one team has no players present at the coin toss their opponents automatically win the coin toss and can choose to serve or receive etc. Only one player is required to conduct a coin toss.
- The refereeing procedures involved in this Special Protocol are in order:
 1. Whistle and call the team Captains for the coin toss in front of the SCORER's table
 2. Upon confirmation that only 1 team is present inform the respective Captain that they have automatically won the right to first choice (serve, receive or side of the court)
 3. Obtain from the team Captain present their first choice (e.g.: side of the court)
 4. Inform them that the other team Captain will complete their choices at the completion of the official warm up time
 5. Confirm with the SCORERS the decision of the team Captain and obtain the Pre match respective signature, together with any information available being recorded (e.g.: service order). Note at this stage the SCORER will not be able to complete the score sheet with finality to commence the match as either a) the sides of the court will not be known or b) The team who is serving and receiving will not be known
 6. Whistle and indicate the start of the official warm up time (e.g.: 5 minutes)
 7. Not interrupt the official warm up time of the teams to gather more information (if the other team arrives)
 8. Immediately at the end of the official warm up time, whistle, then signal the teams to go to their designated chairs

9. Only the team present at the coin toss should proceed to their designated chairs
 10. The Captain of the team not present at the coin toss should come to the SCORER's table and convey their decisions (serve, reception, side of the court) that are not already decided (point 4 above)
 11. The team Captain should sign the Pre match Captains section of the Scoresheet and indicate service order.
 12. The SCORER should complete the scoresheet and confirm to the match officials that all information required has been received
 13. The team Captain present at the coin toss should be informed of the decision of the other team
 14. The match officials should commence the match as soon as possible
- Special Protocol 2: If neither team is present (i.e. there are no players) the coin toss is not conducted but the time should be noted in the score sheet's Remarks Section and the REFEREE commences the timing as per the Official Match Protocol (announcing that it has commenced)
 - Many of the refereeing procedures for Special Protocol 1 apply to Special Protocol 2 but are adapted because of no team being present at the coin toss
 - If a team arrives during the Official Match Protocol, the Protocol is continued without alteration and the late team receives no additional warm up time (unless otherwise notified)
 - Both of the above Special Protocols should be done as quickly as possible and should not extend the time of the Official Match Protocol.

Step 6

- The Official Warm Up time is completed by the FIRST REFEREE blowing their whistle and indicating that the match should be ready to commence.
- If at this time the player(s) are still not present the REFEREE should notify the relevant FIVB Delegate(s) of this fact (i.e.: That based on the REFEREE's timing the Official Match Protocol has finished and that the match is now scheduled to commence).
- The FIRST REFEREE does not need to go to the REFEREE's stand at the end of the Official Match Protocol.
- The relevant FIVB Delegate(s) is/ are responsible for conveying any decision regarding the forfeit to the team Captain(s) (if present), match officials, spectators, media etc.
- Scoring of the match result is done in accordance with Section 7: Scoring

5. SCENARIO 3: A TEAM FORFEITS THE MATCH AFTER THE MATCH HAS COMMENCED

- This situation will usually occur due to an injury (but not exclusively)
- The relevant FIVB Delegate(s) should be called to the court as soon as possible.
- The FIRST REFEREE must initially verbally verify that the team wishes to default thus forfeiting the match. This may be after the part of a Medical Assistance Protocol.
- The FIRST REFEREE must complete the following:
 1. Obtain the signature on the score sheet of the Captain of the team wishing to forfeit (this confirms their desire to forfeit)
 2. Confirm with the relevant FIVB Delegate(s) the forfeit
 3. Notify the opposing team Captain of the forfeit
 4. Oversee the completion of the score sheet and sign it to verify its contents
- Scoring of the match result is done in accordance with Section 7: Scoring

6. SPECIFIC NOTES

- Referees should be familiar with the FIVB Official Match Protocol

7. SCORING

- The relevant FIVB Delegate(s) is in Scenario 1 and 2 responsible for verifying the Official Match Result and may record as appropriate comments in the Remarks Section
- At the completion of the match, the FIRST REFEREE should ensure that the Remarks section of the scoresheet has been completed with all the required information as indicated by this protocol and shown by the example in the Score sheet Instructions.
- If the Referee Coach (RC) is not present at the court at the completion of the match, the FIRST REFEREE must obtain the respective signature prior to the score sheet being delivered to the Competition Office, although avoiding any delays for BVIS purposes.

BALL MARK PROTOCOL

The aim of this section is to provide REFEREES with a standardised and quick method by which to deal with the situation of a ball mark protocol being initiated. Officials should pay attention that the process is transparent, not protracted and that the result is decisive and well communicated with the match resuming as quickly as possible.

1. THE PROCESS

- The Ball Mark Protocol as it is applied during a match has only a few components and should be completed by the officials, especially the FIRST REFEREE with a great deal of accuracy and speed to allow a quick resume of the match. The main components of a Ball Mark Protocol are:
 1. Only where significant doubt exists in his / her decision as to whether the ball is in or out the FIRST REFEREE shall decide that a Ball Mark Protocol commences
 2. Team Captains do not have the right to insist on the commencement of a Ball Mark Protocol
 3. The REFEREES and LINEJUDGES should discourage any actions of the players from deliberately covering up / altering etc. of the ball mark. The FIRST REFEREE shall penalize this as appropriate
 4. Team Captains may acknowledge that the initial decision is not correct thus requiring that a Ball Mark Protocol not be initiated or be immediately discontinued
 5. The Ball Mark Protocol has the strength in that it may allow the FIRST REFEREE time to cool down the players after a disputed decision. This does however require the REFEREES to strictly and quickly follow the Ball Mark Protocol

2. THE WORK OF THE FIRST REFEREE

- Initial and quick decision made by the FIRST REFEREE on whether to initiate a Ball Mark Protocol
- FIRST REFEREE to come down from the stand and to indicate to the relevant LINEJUDGE(s) that they are required to come to the position of the ball mark
- Additionally the FIRST REFEREE should ask that the players of the team on the side of the ball mark remove themselves from the area of the ball mark. This is extremely important for it grants equal and fair treatment to both teams within the process
- Verification of the ball mark (in or out)
 1. Once the area near the ball mark is free from players and any relevant LINEJUDGE(s) are present, the FIRST REFEREE should proceed carefully into structured questioning of the LINEJUDGE(s) if required
 2. Initially it should be established if the ball hit the line. This includes the case where the line was in a raised position and touched by the ball
 3. It is important that the LINEJUDGE (if appropriate) should be given the opportunity to:
 - a. Show the position of the ball mark (without touching it)
 - b. Explain verbally what they saw including both the action of the ball contacting the sand and any subsequent actions
 4. The FIRST REFEREE should be clear in their understanding of what the LINEJUDGE has conveyed to them. A good strategy is to get the sequence of events explained as this happened.
 5. When the FIRST REFEREE is satisfied that they have received all available information and are able to make a decision he / she should quickly move to the stand signaling the decision on the ball mark (indicate which team now has the serve) and if applicable penalizing any players crossing the net. NO further delays shall be permitted and the players urged to immediately resume play.
 6. If applicable FIRST REFEREE to verbally announce to the crowd the result of the ball mark protocol at the same time he/she signals the decision.
 7. FIRST REFEREE to recommence the match.

3. THE WORK OF THE SECOND REFEREE

- Initially SECOND REFEREES should place themselves close to the net to dissuade, either through body position or verbal communication, the opposition team from crossing the net.
- It is good practice to remind teams that it is illegal for them to cross the net or its extension.
- He / she should also establish eye contact with the FIRST REFEREE during the entire process.
- Eventually, if required, the SECOND REFEREE may assist the FIRST REFEREE in the final decision.
- The SECOND REFEREE must make sure that the SCORER records correctly the outcome of the Protocol. Play should not recommence until the SCORER has indicated that he/ she is ready.

4. SPECIAL NOTES

- Quick and accurate communication / collaboration before, during and after the ball mark protocol must be implemented. All communication should as much as possible be in English.
- The FIRST REFEREE and the relevant LINEJUDGE must at all times keep eye contact with the ball mark area so that he/she may spot any actions of the players aiming to cover up / alter, etc, the ball mark.
- The SECOND REFEREE should actively - through both use of the whistle, hand signals and verbal communication - indicate to players that they should not cross the net or its extension.
- Ultimately, the FIRST REFEREE may at the time of reviewing of the ball mark require the presence of the SECOND REFEREE for eventual translation or any further assistance.

5. THE LINEJUDGES

- LINEJUDGES should during their officiating try to make their decisions as accurate as possible, especially in calling in or out, thus avoiding the necessity of a Ball Mark Protocol.
- If a Ball Mark Protocol is initiated by the FIRST REFEREE, a LINEJUDGE involved should ensure in his/ her own thinking that they can convey the exact spot and circumstances of the ball's contact with the playing surface.
- Information including position and circumstances of the contact with the playing surface should be conveyed to the FIRST REFEREE if requested.
- It is common for a LINEJUDGE to be requested by the FIRST REFEREE to proceed to the area of the ball mark.
- The LINEJUDGE (and other officials) should in no way alter the playing surface in the area of the ball mark. Attention should be undertaken to avoid persons walking in the area, or indicating on the surface sand with fingers or LINEJUDGE flags.

6. RECOMMENCING THE MATCH

- At the end of the Protocol the FIRST REFEREE should communicate the results of the Ball Mark Protocol to all parties through the use of the appropriate hand signals (indicate which team now has the serve).
- If it is appropriate the FIRST REFEREE must also penalize any player(s) who cross the net or its extension to review the mark. This is penalized as a Rude Conduct (Red Card) and is applied individually.
- Crossing the net or its extension makes no differentiation as to the distance beyond the net (players travelling 1 meter over are treated the same as ones travelling 3 meters). It is, however, possible that players may receive other sanctions subsequently for other actions such as delays, verbal abuse, etc.
- The SECOND REFEREE must make sure that the SCORER records correctly the outcome of the Protocol. Play should not recommence until the SCORER has indicated that he/ she is ready.

MEDICAL ASSISTANCE PROTOCOLS

To be utilised at FIVB World Competitions under rule 17.1 of the Official Beach Volleyball Rules

Medical assistance will be granted to athletes through the use of the relevant protocols as herewith listed

- Medical Timeout (MTO) – to be implemented exclusively for significant blood related injury
- Recovery Interruption (RIT) – to be implemented for:
 - Significant injury caused by a trauma incident suffered during the course of the match
 - Illness in relation to Severe Weather conditions officially declared, or Use of Toilet

For any of the cases above, if the 1st referee judges the case as minor and potentially quickly resolved, this must be treated with no delay, without any need for medical assistance. Otherwise athletes must first use a team time out or other regular interruptions if available at the time, before the 1st referee can authorize the start of the relevant protocol.

Referees should be aware of the circumstances leading up to the injury as they are responsible to establish its nature (if blood, or traumatic, or weather condition related) and extent (if minor or significant) before they decide to initiate the relevant procedure.

“Medical Time Out” (MTO) and “Recovery Interruption” (RIT) protocols, when implemented must be dealt with the quickest the possible and the complete process must not last more than 5 minutes total, with the time counting starting from the moment the protocol is initiated by the 1st referee.

The duration of the “medical assistance” protocols shall be electronically timed from the moment the scorer hits the relevant button at the e-scoresheet, with the timer being displayed at the litescore. The timing shall start from the whistle of the 1st referee after he/she authorizes the “Medical Time Out” or the “Recovery Interruption”, ending when the litescore buzzer signals the end of the maximum authorized 5 minutes, or at the whistle of the 1st referee immediately after treatment is declared complete by the official medical personnel, or if no treatment can be provided, or when the player declares that he/she is ready to resume play. In case no e-scoresheet software is applied the medical assistance shall be manually timed and recorded by the official scorer. This includes in this sequence: Time the 1st referee initiated the protocol (in hours, minutes and seconds); the set; the score; team serving; player to undergo medical assistance; the type of medical assistance provided; Time match resumed or Time of forfeit; total duration of the medical assistance; total duration of the interruption.

Under all circumstances above, the official medical personnel shall be requested to come to the court as it will be their responsibility to supervise the treatment and report to the 1st referee when this has been completed, unless the player declares her/himself ready to resume play before their arrival at the court area

When treatment is completed or if no treatment can be provided in that short time period, play must resume or the relevant team is declared incomplete for the set or the match, as applicable.

Medical treatment may be provided to players at regular game interruptions (TO, TTO, intervals) with no delay to the game.

GENERAL OVERVIEW

Medical assistance may be provided by official medical personnel (i.e. physician and/or physical therapist from the event organizer) or team’s medical personnel (i.e. team physician and/or team physical therapist, provided that these have been properly accredited for the event), at the choice of the team.

In any case the official medical personnel shall be requested to come to the court as it will be their responsibility to supervise the treatment and report to the 1st referee when this has been completed, unless the player declares her/himself ready to resume play before their arrival at the court area.

Medical personnel of the team are allowed on court. If the team’s medical personnel succeed in resolving the case before the arrival of the requested official medical personnel and the player declares that he/she is ready to resume play, the Referee is not required to wait for the official medical personnel arrival. The relevant medical assistance protocol will be in any case assigned to that player.

To be able to provide treatment during matches, official medical personnel must (while team medical personnel are recommended to) be seated in the immediate courtside area during the match. No additional time will be granted to wait for team’s medical personnel to make their way to the court.

The decision whether a player is medically fit or not to resume after an injury/illness depends entirely upon the player. Even if the official medical personnel advise the player not to continue, the final decision of whether to resume or not rests with the player. This condition is covered in the signed “Players Commitment”. However, in extreme cases, the doctor of the competition can oppose the return of an injured/ill player.

In the first case above, the referees shall record at the “remarks section” of the score sheet that the player specifically requested to continue the match against medical advice from the official medical personnel. The relevant post-match signature by the captain will verify this statement.

It is possible for the same player to undergo “Medical Time Out” with “Recovery Interruption” in the same match, as follows:

- MTO (blood related injury) – the player must be allowed treatment for blood-related injury at any and all times;
- RIT (trauma related injury) – this is allowed at any and all times, however a player is not entitled to a second RIT to treat an injury resulting from a previous trauma incident in the match;
- RIT (severe weather conditions) or RIT (use of toilets) – only one stoppage in the match will be allowed per player. Therefore, no player can be given RIT for (severe weather conditions) plus RIT for (use of toilets) and vice-versa, in the same match.
- MTO (blood injury) and RIT (traumatic injury) stoppages can occur in the same match to the same player, and in addition it is possible for the player to be authorized for one of the other two possible types of RIT (severe weather) or (use of toilets), regardless of the sequence of use.

Any time a forfeit due to injury/illness occurs (including before the match starts) official medical personnel and the FIVB Medical Delegate (if one is appointed to the event) must be present.

1. MEDICAL TIME OUT – BLOOD INJURY

To be implemented exclusively for significant blood related injuries.

a) OVERVIEW

- The safety of all parties is of prime importance, and blood injuries must therefore be treated without delay, whether detected by the player or the officials.
- If the bleeding is minor and can be stopped easily so as to cause a minimum delay to the match, this is not regarded as a “medical time out”.
- If the bleeding is more significant, it should be treated as requiring medical assistance and treated as outlined below.
- If the team has an available time out, or the play that just finished lead to a technical time out or to the set interval, then treatment can be provided with no delay to the game. Otherwise, the 1st referee shall initiate a “medical time out”.
- For either case above, the Referees must inspect all match balls and balls with any blood spill should be replaced and subsequently cleaned and disinfected. Blood on any other equipment should also be cleaned and disinfected.
- The “Medical Time Out” protocol is a series of structured steps designed to enable successful resolution of a blood related injury with minimum delay (under Rule 17.1).

b) AT THE TIME OF THE BLOOD INJURY

- Upon the concerned player or the referees realize bleeding, as soon as the rally is interrupted or finishes if this is the last action of the rally, the 2nd referee must immediately be active in going to the player and establishing the extent of the bleeding.
- If the bleeding is minor and can be stopped easily, this must be treated without delay with the 2nd referee directing the player to the scorer’s table where a medical kit is available for him/her to clean the cut and eventually bandage it.
- If the bleeding is more significant and the team has no available time out, and the play that just finished did not lead to a technical time out or to the set interval, then the 2nd referee must signal to the 1st referee to come down the stand and inform the player that a “medical time out” will be initiated by the 1st referee, followed by asking the player if he/she wishes to be treated by the official medical personnel of the tournament or the team’s accredited medical personnel?
- The 2nd referee will then call the relevant medical assistance to the court, while the 1st referee shall blow the whistle and show the relevant signal with this initiating the protocol followed by notifying the scorer to start the timing and the recording of the “medical time out” as appropriate.
- **Note:** under all circumstances, the official medical personnel shall be requested to come to the court and the Technical Delegate and/or Referee Coach informed so that they can oversee the situation.

c) UPON THE MEDICAL TIMEOUT BEING INITIATED

- The 2nd referee immediately notifies a number of people to come to the court: FIVB Technical Delegate, FIVB Referee Coach and FIVB Medical Delegate if present, followed by monitoring the arrival of the relevant medical assistance among the official medical personnel assigned on site, allowing the team's medical personnel into the court in case these have been properly accredited for the event.
- It is desirable that the 2nd referee is the one to actively search for these above listed people, which ultimately may require leaving the playing area or to make use of a Walkie-Talkie. The 1st referee shall maintain supervision of the injured player.
- It is acceptable that the injured player remains in a fixed position on the court if indicated. The player can also move freely within the playing court or free zone or go to the respective team area.
- If requested by the medical personnel in attendance, with the approval by the 1st referee, the injured player may be allowed to leave the court if the assistance necessary cannot be provided within the playing area. This may occur in some situations (e.g. to clean or suture a wound). A player who must leave the court area shall be accompanied by the 2nd referee (or Referee Coach, or reserve referee if applicable).
- The 1st referee (or alternatively the official who has accompanied the player) actively supervises the process aiming at the injured player to return to position within the required recovery time.
- The 2nd referee monitors that the injured player's team-mate and the opponents remain on the playing court or free zone or go to their respective team's area. Players are entitled to use balls during this time.
- The 2nd referee should during the recovery time also verify that all the details have been recorded correctly by the scorer. Special attention must be given in case no e-scoresheet software applies.
- Players should be informed of the elapsed time during the medical time out. The 1st referee informs the injured player and the medical personnel while the 2nd referee is responsible to inform the injured player's team-mate and the opponents.
- At the completion of the "medical time out", the 1st referee will ask the injured player to return to their position on the court while moving back to the stand, with the 2nd referee indicating to the official scorer to ensure the recording of the required details on the score sheet.
- Note that the ending of the recovery time will be signalled by the buzzer after the maximum authorized 5 minutes have been exhausted, or otherwise by the whistle of the 1st referee immediately after treatment is declared complete by the official medical personnel, or if no treatment can be provided, or when the player declares that he/she is ready to resume play.
- However, before a player being allowed to return to the court the bleeding has to be completely stopped or contained (closed) so that no blood spill can occur.

2. RECOVERY INTERRUPTION - TRAUMATIC INJURY

To be implemented exclusively for significant injuries caused by a trauma incident suffered during the course of the match.

a) OVERVIEW

- The safety of all parties is of prime importance, and any injury that is the outcome of an involuntary impact resulting from a playing action, e.g.: a player hitting the net pole or the referee stand; contact between players; player being hit by the ball, etc must therefore be treated without delay, whether detected by the player or the officials.
- If the injury is minor and can be resolved easily so as to cause a minimum delay to the match, this is not regarded as requiring medical assistance.
- If the injury is more significant, it should be treated as requiring medical assistance and treated as outlined below.
- If the team has an available time out, or the play that just finished lead to a technical time out or to the set interval, then treatment can be provided with no delay to the game. Otherwise, the 1st referee shall initiate a "Recovery Interruption – traumatic injury".
- A player is not entitled to a second "Recovery Interruption" to treat an injury resulting from a

previous trauma incident in the match.

- The “Recovery Interruption - traumatic injury” protocol, is a series of structured steps designed to enable successful resolution of a traumatic injury with minimum delay (under Rule 17.1).

b) AT THE TIME OF THE TRAUMATIC INJURY

- Upon the concerned player or the referees realize an injury caused by a trauma incident during the play, as soon as the rally is interrupted or finishes if this is the last action of the rally, the 2nd referee must immediately be active in going to the player and establishing the extent of the injury.
- If the injury is minor and can be resolved easily, this must be treated without delay with the 2nd referee actively supervising the process as to the injured player to return to position the sooner the possible.
- If the injury is more significant and the team has no available time out, and the play that just finished did not lead to a technical time out or to the set interval, then the 2nd referee must signal to the 1st referee to come down the stand and inform the player that a “recovery interruption” will be initiated by the 1st referee, followed by asking the player if he/she wishes to be treated by the official medical personnel of the tournament or the team’s accredited medical personnel?
- The 2nd referee will then call the relevant medical assistance to the court, while the 1st referee shall blow the whistle and show the relevant signal with this initiating the protocol followed by notifying the scorer to start the timing and the recording of the “recovery interruption” as appropriate.
- **Note:** under all circumstances, the official medical personnel shall be requested to come to the court and the FIVB Delegates informed so that they can oversee the situation.

c) UPON THE RECOVERY INTERRUPTION BEING INITIATED

- The 2nd referee immediately notifies a number of people to come to the court: FIVB Technical Delegate, FIVB Referee Coach and FIVB Medical Delegate if present, followed by monitoring the arrival of the relevant medical assistance among the official medical personnel assigned on site, allowing the team’s medical personnel into the court in case these have been properly accredited for the event.
- It is desirable that the 2nd referee is the one to actively search for these above listed people, which ultimately may require leaving the playing area or to make use of a Walkie-Talkie. The 1st referee shall maintain supervision of the injured player.
- It is acceptable that the injured player remains in a fixed position on the court if indicated. The player can also move freely within the playing court or free zone or go to the respective team area.
- If requested by the medical personnel in attendance, with the approval by the 1st referee, the injured player may be allowed to leave the court if the assistance necessary cannot be provided within the playing area. This may occur in some situations. A player who must leave the court area shall be accompanied by the 2nd referee (or Referee Coach, or reserve referee if applicable).
- The 1st referee (or alternatively the official who has accompanied the player) actively supervises the process aiming at the injured player to return to position within the required recovery time.
- The 2nd referee monitors that the injured player’s team-mate and the opponents remain on the playing court or free zone or go to their respective team’s area. Players are entitled to use balls during this time.
- The 2nd referee should during the recovery time also verify that all the details have been recorded correctly by the scorer. Special attention must be given in case no e-scoresheet software applies.
- Players should be informed of the elapsed time during the “recovery interruption”. The 1st referee informs the injured player and the medical personnel, while the 2nd referee is responsible to inform the injured player’s team-mate and the opponents.
- At the completion of the “recovery interruption”, the 1st referee will ask the injured player to return to their position on the court while moving back to the stand, with the 2nd referee indicating to the official scorer the nature of the “recovery interruption – traumatic injury” ensuring that the recording of the required details on the score sheet are accurate.
- Note that the ending of the recovery time will be signalled by the buzzer after the maximum authorized 5 minutes have been exhausted, or otherwise by the whistle of the 1st referee immediately after treatment is declared complete by the official medical personnel, or if no treatment can be provided, or when the player declares that he/she is ready to resume play.

3. RECOVERY INTERRUPTION - ILLNESS (SEVERE WEATHER)

To be implemented exclusively for illness in relation to severe weather conditions officially declared.

a) OVERVIEW

- The Technical Delegate is responsible for monitoring the playing conditions and with basis on the WBGT index, in consultation with the Official Medical Doctor of the tournament or the FIVB Medical Delegate (if present) and the FIVB Referee Coach may apply exceptional measures such as:
 - To increase the time between rallies from 12 sec to 15 sec; and if necessary
 - To permit quick water breaks at the side changes
 - To assign an extra technical time-out when the sum of points scored by the teams equals 42 points
- When any of the measures above is applied, the tournament is officially considered under severe weather conditions.
- Only with the tournament being officially declared under “Severe Weather Conditions”, the 1st referee may authorize “recovery interruption” due to an athlete illness in relation to severe weather conditions.
- The safety of all parties is of prime importance, and any illness such as dizziness, high body temperature, loss of consciousness, etc related to “severe weather conditions” must therefore be treated without delay, whether detected by the player or the officials. This is regarded as “Recovery Interruption – severe weather”.
- If the illness is minor and can be stopped easily so as to cause a minimum delay to the match, this is not regarded as a “recovery interruption”.
- If the illness is more significant, it should be treated as requiring medical assistance and treated as outlined below.
- If the team has an available time out, or the play that just finished lead to a technical time out or to the set interval, then treatment can be provided with no delay to the game. Otherwise, the 1st referee shall initiate a “recovery Interruption – severe weather”.
- A player is not entitled to a second “recovery interruption” in the match to treat an illness or to use toilets.
- The “Recovery Interruption - severe weather” protocol, is a series of structured steps designed to enable successful resolution of a illness with minimum delay (under Rule 17.1).

b) AT THE TIME OF THE ILLNESS

- Upon the concerned player or the referees realize a case of illness, as soon as the rally is interrupted or finishes if this is the last action of the rally, the 2nd referee must immediately be active in going to the player and establishing the seriousness of the illness.
- If the illness is more significant and the team has no available time out, and the play that just finished did not lead to a technical time out or to the set interval, then the 2nd referee must signal to the 1st referee to come down the stand and inform the player that a “recovery interruption” will be initiated by the 1st referee, followed by asking the player if he/she wishes to be treated by the official medical personnel of the tournament or the team’s accredited medical personnel?
- The 2nd referee will then call the relevant medical assistance to the court, while the 1st referee shall blow the whistle and show the relevant signal with this initiating the protocol followed by notifying the scorer to start the timing and the recording of the “recovery interruption” as appropriate.
- **Note:** under all circumstances, the official medical personnel shall be requested to come to the court and the Technical Delegate and/or Referee Coach informed so that they can oversee the situation.

c) UPON THE RECOVERY INTERRUPTION BEING INITIATED

- The 2nd referee immediately notifies a number of people to come to the court: FIVB Technical Delegate, FIVB Referee Coach and FIVB Medical Delegate if present, followed by monitoring the arrival of the relevant medical assistance among the official medical personnel assigned on site,

allowing the team's medical personnel into the court in case these have been properly accredited for the event.

- It is desirable that the 2nd referee is the one to actively search for these above listed people, which ultimately may require leaving the playing area or to make use of a Walkie-Talkie. The 1st referee shall maintain supervision of the ill player.
- It is acceptable that the ill player remains in a fixed position on the court if indicated. The player can also move freely within the playing court or free zone or go to the respective team area.
- If requested by the medical personnel in attendance, with the approval by the 1st referee, the ill player may be allowed to leave the court if the assistance necessary cannot be provided within the playing area. This may occur in some situations. A player who must leave the court area shall be accompanied by the 2nd referee (or Referee Coach, or reserve referee if applicable).
- The 1st referee (or alternatively the official who has accompanied the athlete) actively supervises the process aiming at the injured player to return to position within the required recovery time.
- The 2nd referee monitors that the ill player's team-mate and the opponents remain on the playing court or free zone or go to their respective team's area. Players are entitled to use balls during this time.
- The 2nd referee should during the recovery time also verify that all the details have been recorded correctly by the scorer. Special attention must be given in case no e-scoresheet software applies.
- Players should be informed of the elapsed time during the "recovery interruption". The 1st referee informs the ill player and the medical personnel while the 2nd referee is responsible to inform the ill player's team-mate and the opponents.
- At the completion of the "recovery interruption", the 1st referee will ask the ill player to return to their position on the court while moving back to the stand, with the 2nd referee indicating to the official scorer the nature of the "recovery interruption – severe weather) ensuring that the recording of the required details on the score sheet are accurate.
- Note that the ending of the recovery time will be signalled by the buzzer after the maximum authorized 5 minutes have been exhausted, or otherwise by the whistle of the 1st referee immediately after treatment is declared complete by the official medical personnel, or if no treatment can be provided, or when the player declares that he/she is ready to resume play.

4. RECOVERY INTERRUPTION - USE OF TOILETS

To be implemented for delay at the use of toilets during the match.

a) OVERVIEW

- Players are entitled to use toilets at any time during the match, as long as they do not delay the game.
- In the case a player delays the normal sequence of the game while using the toilets, a "Recovery Interruption – use of toilets" will be assigned to that player with the match resuming as soon as the player is back to the court.
- A player is not entitled to a second "recovery interruption" in the match for use of toilets or illness.
- Organizers are required to supply 2 dedicated athletes' toilets (one for the women and one for the men) - portable if it is not possible to use an existing facility - within a range of maximum 100 metres from any of the competition courts. Referees are required to report this aspect at their homologation court checking prior to the start of the tournament.
- All Referees must have awareness of the physical location of the athlete dedicated toilets, easier and safer access etc.

b) AT THE TIME OF THE USE OF TOILETS

- Upon the concerned player or the referees realize the need for use of toilet; the 2nd referee must immediately be active in going to the player and establishing that need.
- If the team has an available timeout, or the play that just finished lead to a technical time out or to the set interval, then the player is entitled to use the toilet with no delay to the game.

- The 2nd referee must signal to the 1st referee the need for the use of the toilet and inform the player that he/she needs to be quick otherwise a “recovery interruption – use of toilets” will be initiated by the 1st referee in case the process delays the normal sequence of the game.
- If the team has no available time out, and the play that just finished did not lead to a technical time out or to the set interval, then the 2nd referee must signal to the 1st referee to come down the stand and inform the player that a “recovery interruption” will be initiated by the 1st referee.
- In any of the cases above, the player shall be accompanied by the 2nd referee (or reserve referee if applicable) who actively supervises the process aiming at the concerned player to return to the court within the required time.

c) UPON THE RECOVERY INTERRUPTION BEING INITIATED

- In the case the 1st referee assigns a “Recovery Interruption – use of toilets” to the player, the 1st referee shall come down the stand, blow the whistle and show the relevant signal with this initiating the protocol followed by notifying the scorer to start the timing and the recording of the “recovery interruption” as appropriate.
- In the meantime, the 2nd referee (or alternatively the official who has accompanied the player) actively supervises the process aiming at the player to return to position within the required recovery time.
- At the completion of the “recovery interruption”, the 1st referee will ask the concerned player to return to their position on the court while moving back to the stand, with the 2nd referee indicating to the official scorer the nature of the “recovery interruption – use of toilets” ensuring that the recording of the required details on the score sheet are accurate.
- Note that the ending of the recovery time will be signalled by the buzzer after the maximum authorized 5 minutes have been exhausted, or otherwise by the whistle of the 1st referee immediately after the player is back from the use of the toilets to the court.

GENERAL ADDITIONAL NOTES

- All Referees and the FIVB Referee Coach must have awareness of the physical location of the medical assistance in its various forms: First aid, doctors, physiotherapists, ambulance access etc.
- The Referees must be aware as to the official exact nature of a medical personnel member as agreed by the Technical Delegate, as there are various forms of medical personnel, (medical doctor, and physiotherapist). The Referees must ensure that the medical personnel member is appropriate to treat the players’ injury.
- Organizers are required to provide medical personnel (first aid, medical doctor and physiotherapist) at all court locations. This includes events with more than 1 venue.
- Organizers are required to supply 2 dedicated athletes’ toilets (one for the women and one for the men) - portable if it is not possible to use an existing facility - within a range of maximum 100 metres from any of the competition courts. Referees are required to report this aspect at their homologation court checking prior to the start of the tournament.
- For any cases of medical related forfeit, the injured/ill player shall be asked by the Referee if this is due to heat exhaustion and/or dehydration. If this is the case, the player is also asked “Have you suffered from vomiting and/or diarrhea during the past five days?” This information is then reported to the Referee Coach for the relevant purposes (BVB-45 Heat Stress Monitoring Results).
- In the case of an athlete being assigned a “Recovery Interruption” or forfeiting a match due to an alleged injury/illness, immediately following the relevant score sheet administration he/she will be given a copy of the BVB/49 form by the match referees. The follow up of the concerned procedure is the responsibility of the injured/ill player. (refer to FIVB Beach Volleyball Sports Regulations). However, the referees of the match must immediately notify the RC verbally and via the scoresheet that a BVB/49 form has been delivered to that concerned player.
- Scorers must be closely questioned in their training to verify that they fully understand Medicals Assistance circumstances and resultant recording on the score sheet.
- At the completion of the match, the 1st referee should ensure that the Remarks section of the score sheet has been completed with all the required information as indicated by this protocol and shown by the example in the Scoresheet Instructions.
- At FIVB World and Official Competitions, a maximum of two “Recovery Interruption” due to illness in relation to Severe Weather conditions, or use of toilet are allowed per athlete within a rolling 12-month period. (refer to FIVB Beach Volleyball Sports Regulations).

PROTEST PROTOCOL

To be utilised at FIVB, World and Official Competitions under rules 5.1.2.1 and 5.1.3.2 of the Official Beach Volleyball Rules.

1. OVERVIEW

- The Protest Protocol is a series of structured steps designed to enable successful resolution of a protest on the application of the rules of the game, from player(s) involved in FIVB Beach Volleyball Competitions.
- A Protest Protocol is commenced by a team Captain formally indicating his / her wish to protest following the explanation he / she has received on the application or interpretation of the rules from the FIRST REFEREE.
- The Protest Protocol may be undertaken by the relevant FIVB Official(s) based on circumstances before, during or after a match.
- The relevant FIVB Official(s) will consider the protest on its merits based on three criteria.
- Two levels of Protest Protocol exist, these being undertaken either at the time of the circumstances(s) (Level 1) and / or after the match has been completed (Level 2).

2. AIM OF THE PROTEST PROTOCOL

- The Protest Protocol represents the FIVB's formal procedure to deal with problems occurring before, during and after a match. Therefore the aims of the Protest Protocol are:
 1. To establish or re-establish the match conditions to the match's previous state of play and to recommence play as soon as applicable
 2. To provide a structured process to allow resolution of Protests governed by the appropriate FIVB regulations or rules
 3. To enact a procedure that has a minimal impact on the flow of a match especially if the Protest involves more than one Level of jurisdiction
 4. To implement a Protocol that is logical, transparent and easy to follow
 5. To implement a Protocol that is based on sound legal and ethical grounds
 6. To implement a Protocol that maximises the relevant FIVB Official(s') chances of making a correct decision on the legitimacy of the Protest by the player(s).

3. CRITERIA FOR EVALUATING A PROTEST

- The criteria for acceptance of a legitimate Protest shall involve any one or more of the following circumstances:
 1. The REFEREE misinterpreted or did not correctly apply the rules / regulations, or did not assume the consequences of his/ her decisions.
 2. There is a scoring error (rotation or match score)
 3. A technical aspect of the match conditions (weather, light etc)
- The FIRST REFEREE must only consider these three criteria in evaluating whether to accept a Protest as being valid or not and therefore capable of potential consideration.
- It is improper for the FIRST REFEREE to accept a Protest that involves playing actions or misconduct unless there is a challenge on possible misinterpretation of the Rules of the Game.
- The relevant FIVB Delegate(s) must also utilise these three criteria to evaluate the relative merits of the Protest once it has been accepted as valid for consideration. The FIVB Delegate(s) must clearly identify which of the three criteria apply to the protest. It is possible that a protest may satisfy more than 1 criterion.
- The relevant FIVB Delegate(s) may also consider if due process has been observed in the consideration of the Protest.

4. FIRST REFEREE'S ACTIONS PRIOR TO COMMENCEMENT OF PROTEST PROTOCOL

- A Protest Protocol is commenced by a team Captain formally indicating his / her wish to protest following the explanation he / she has received on the application or interpretation of the rules from the FIRST REFEREE.
- The FIRST REFEREE must therefore, prior to signalling for the relevant FIVB Delegate(s) to enter the court, ensure that all practicable steps have been taken to ensure that the Protest Protocol is not enacted. This includes:
 1. Communicating clearly to the team Captain the nature of the fault / basis of decision
 2. Repetition of hand signals where appropriate
 3. Consultation with all relevant officials applicable to the application / interpretation of the rule(s)
 4. Confirm the criteria for a valid protest
 5. Confirm that, after all the above steps have been undertaken, that the team Captain wishes to formally protest.
- The FIRST REFEREE should not:
 1. Once a team Captain has formally protested and this meets the criteria for a valid protest choose not to request the relevant FIVB Delegate(s) presence on court.
 2. State to the players the likely outcome of the protest.

5. PROTEST PROTOCOL LEVEL 1: RESOLVED AT TIME OF PROTEST (by Ref Coach or Technical Delegate)

5.1 Overview of Protocol for resolving Protest at the time of player(s) initiation

- A Protest Protocol (Level 1) is commenced by a team Captain formally indicating his / her wish to protest following the explanation he / she has received on the application or interpretation of the rules from the FIRST REFEREE and the FIRST REFEREE then requesting the presence of the relevant FIVB Delegate(s).
- The Protest Protocol Level 1 (both before or during a match) involves the following stages:
 1. Initial determination of nature of Protest
 2. Decision whether to proceed with Protocol based on its validity
 3. Gaining of further information / evidence applicable to Protest
 4. Conveying results of Protest to relevant Officials and Players
 5. Conveying results of the Protest to Scorers and other parties
 6. Starting or recommencing the match.
- A Protest Protocol (Level 1) is the first of two stages of potential protest.

5.2 Who evaluates the protest?

- The Referee Coach will usually undertake a Protest Protocol at the time of the protest. Only in exceptional circumstances would a Level 1 Protest not be undertaken at the time of its initiation.
- In exceptional circumstances the Technical Delegate may replace or substitute for the Referee Coach.
- Another FIVB Official may in exceptional circumstances assist the FIVB Delegate who evaluates the validity of a protest.
- The FIVB Delegate evaluating the protest should in all but exceptional circumstances not be from a country involved in the protest nor have a conflict of interest in its potential outcome.
- Persons providing information to the Protest Protocol do not have a decision-making authority on the validity or outcome of the protest.
- All FIVB Delegate(s), especially the Referee Coach, should not place themselves in a position to potentially influence proceedings before the Protest Protocol has commenced.
- Referee Coaches should ensure that their movements during the competition maximises their potential availability for Protest Protocols.

5.3 How is the Protest Protocol commenced? (Referee Delegate to conduct)

- The Protocol commences with the signal of the FIRST REFEREE indicating that the Referee Coach should enter the Field of Play.
- A Protest may only be requested by the team Captain(s).

- The FIRST REFEREE should signal only to the Referee Coach when the team Captain(s) has formally (as defined in rule 5.1.2.1) indicated his / her wish to institute a Protest Protocol and this meets the criteria for a valid protest.
- The Protest Protocol (Level 1) implies the payment of a sanction fee (bond) as ruled by the FIVB Handbook.

5.4 The process of the Protest Protocol (after Protocol commenced)

- The players should initially go to their respective designated chairs.
- The Referee Coach should initially speak to the FIRST REFEREE to obtain the general nature of the Protest.
- The Referee Coach must then confirm with the relevant team Captain the basis for their Protest.
- The Referee Coach should then if needed clarify any points of uncertainty with the FIRST REFEREE.
- Information / evidence should then be gathered from other parties pertinent to the decision.
- This information / evidence should if possible be gathered individually but if appropriate may be gathered collectively.
- A person to translate this information / evidence may be utilised.
- The Protocol should, where possible, be conducted in the working language of the FIVB: English.
- The process of gathering of information / evidence should be conducted near the SCORER's table and the relevant team area.
- The players should not be physically present at the questioning of the FIRST REFEREE or other parties.
- The overall process must be a clearly structured pattern for gathering information / evidence.
- During the Protest Protocol the players may after an initial organisational time period:
 1. Use the playing court but not leave the free zone
 2. Use the match balls
 3. Use the current side of the court that they are playing on or both sides of the court by agreement of all the players.

5.5 Resolution of a Protest Protocol

- The decision to resolve a Protest Protocol should be based on the following:
 1. Strict interpretation of the criteria for evaluating a Protest (section 3 above)
 2. An assumption that the decision as made by the match officials is correct, especially the final decision of the FIRST REFEREE
 3. The facts as established by questioning the parties involved with the Protest, especially the observations of the match officials
 4. The establishment of the correctness of the officials' actions in relation to the Rules of the Game.
 5. Where the Rules of the Game do not cover a specific action the Referee Coach may interpret the spirit of the Rules of the Game.
- The FIRST REFEREE should be the first person informed of the outcome of the Protest Protocol followed by appropriate other match officials
- The Captains of both teams should then be informed on court of the result of the Protest Protocol. The Captains should receive a brief summary of the basis for the decision.
- If, upon being informed no team Captain(s) question the decision, the Protest Protocol is considered resolved and officially closed.
- Captain(s) of either team that disagree with the decision, have the right to request at that moment a Protest Protocol at Level 2 which may be then confirmed at the end of the match.

5.6 Recommencement of the match

- Following the Referee Coach's conveying of the decision to the appropriate match officials and players the following steps may be necessary to recommence play:
 1. Decision conveyed to the Scorer
 2. Decision conveyed to the public (which may include announcement of resulting decision)
 3. Decision conveyed to the media (television, radio etc).
- If the protest by the team Captain is successful all measures necessary to correct the match state (as advised by the Referee Coach) must be undertaken.

5.7 Possible consequences of a Protest Protocol

- There are 3 possible consequences of a protest at Level 1 (resolved or attempted to be resolved at the time of the Protest):

1. Following the Protocol the protest by the team Captain(s) is rejected. In this circumstance the Technical Delegate will be notified by the Referee Del Referee Coach and a fine corresponding to the Protest Level 1 fee will be applied (see FIVB Beach Volleyball Handbook, Chapter addressing Specific Regulations and Sanctions).
2. Following the Protocol the protest by the team Captain(s) is accepted. No fine applies here
3. The Protest Protocol could not be undertaken (e.g.: no FIVB Official available) and / or the team Captain(s) may appeal the result of the Protest Protocol at Level 1. Both of these situations are resolved under Level 2 (after the match has finished).

5.8 How is a Protest Protocol recorded on the score sheet?

- At the time the Referee Coach initially enters the court the SCORER should record on the score sheet (as per the FIVB Score sheet Instructions) sufficient match details to be able to recommence the match from this point.
- The SCORER should not record any factual information regarding the basis of the protest.
- If the Protest Protocol is enacted and subsequently is rejected the words REJECTED LEVEL 1 should be recorded in the remarks section.
- If the Protest Protocol is enacted and subsequently is accepted the words ACCEPTED LEVEL 1 should be recorded in the remarks section.
- If after the protest being rejected at Level 1 team Captain(s) state their wish to request a Protest Protocol at Level 2, the words REJECTED / PENDING LEVEL 1 should be recorded in the remarks section.
- If after the protest being accepted at Level 1 team Captain(s) state their wish to request a Protest Protocol at Level 2, the words ACCEPTED / PENDING LEVEL 1 should be recorded in the remarks section.
- If the Protest Protocol is not able to be undertaken (after the relevant FIVB Official was requested to enter the field of play), the words PENDING LEVEL 1 shall be recorded in the remarks section.
- The Referee Coach has the authority to add further information as required in the remarks section of the score sheet.
- The SECOND REFEREE is responsible for checking the score sheet prior to the recommencement of play.
- At the completion of the match, the FIRST REFEREE should ensure that the Remarks section of the score sheet has been completed with all the required information as indicated by this protocol.
- If the Referee Coach (RC) is not present at the court at the completion of the match, the FIRST REFEREE must obtain the respective signature prior to the score sheet being delivered to the Competition Office, although avoiding any delays for BVIS purposes.

6. PROTEST PROTOCOL LEVEL 2 RESOLVED AFTER THE MATCH (by the Organizing Committee)

6.1 Overview of Procedure

- The request for a Protest Protocol (Level 2) is commenced by a team Captain(s) formally indicating his / her wish to protest at Level 2 based on either:
 1. The Protest Protocol was not initiated at Level 1 (no FIVB Official available).
 2. The Protest was rejected at Level 1 by the relevant FIVB Delegate(s).
 3. The Protest was accepted at Level 1 by the relevant FIVB Delegate(s) but subsequently challenged by the other team Captain.
 4. Events after the completion of the match.
- A Protest Protocol Level 2 must (except in the case of events after a match) relate to protests that were correctly requested and recorded under Level 1 of the Protest Protocol by either Captain in the respective team.
- The process of confirmation of a Protest Protocol Level 2 involves the following stages:
 1. Initial recording on the score sheet of the basis of Protest (Level 2)
 2. Payment of the concerned bond (see FIVB Beach Volleyball Handbook)
 3. Organizing Committee reviewing basis for Protest
 4. Conveying of results of the Protest to all parties including explanation of the basis of the decision
 5. If appropriate corrective action to replay the match.

6.2 Who evaluates the protest?

- The Technical Delegate will request that the Organizing Committee be convened whose membership and procedure to be followed is defined by the FIVB Beach Volleyball Handbook.
- The Referee Coach is not a member of the protest Committee.
- The Referee Coach may be required to advise the protest Committee on the Rules of the Game.
- The Referee Coach (or the Technical Delegate) may be required to summarise the Level 1 Protest Protocol rejected or accepted plus appropriate facts relating the criteria for the decision.

6.3 How is the Protest Protocol commenced?

- The Level 2 protest is commenced by the team Captain wishing to Protest, at the end of the match and before signing the score sheet, confirming this fact in writing in its remarks section.
- It is not necessary for the team Captain to write the details of the protest. The protest may be written by any party but must finally be signed by the Captain of the appropriate team.
- The match officials must not prevent or dictate the content of the Protest.
- The Protest should desirably be recorded in the Working Language of the FIVB: English.
- The Protest Protocol (Level 2) is accompanied by the payment of a bond as ruled by the FIVB Handbook.

6.4 The process of the Protest Protocol

- The process of the Protest Committee considering the Protest is governed by the FIVB Beach Volleyball Handbook.
- The score sheet may have a linking statement to other document regarding the protest (if insufficient space exists). This document is to be presented to the FIVB Technical Delegate no later than 30 minutes after the end of the match.
- The Captain of the team not involved in the protest must be informed immediately verbally by the FIRST REFEREE if a Protest (Level 2) is confirmed in writing in the remarks section of the score sheet.

7. FIVB OFFICIAL REPORTS

- The Referee Coach at Level 1 and the Organizing Committee at Level 2, must write a report stating the basis for the decision and confirming the process undertaken (BVB / Refereeing Coach's Protest Protocol Report, supplied in digital format).
- A copy of the score sheet shall be attached to the Report.
- The Referee Coach Report should be included in the Technical Delegates report to the FIVB.
- The Referee Coach BVB/25 report to the FIVB Beach Volleyball Referees Commissioner should include comments on the number and the nature of Protests undertaken, the key issues and outcomes and a copy of their Report.
- The Referee Coach must, as soon as possible after a match where a Protest Protocol was "Rejected at Level 1", supply the Technical Delegate with a copy of their report and the relevant score sheet. This report and score sheet allows the Technical Delegate to immediately convene a meeting with the relevant team(s) for confirming the application of the relevant sanction fee (bond). See FIVB Beach Volleyball Handbook.

1ST REFEREE VERBAL COMMUNICATION WITH THE AUDIENCE PROTOCOL

To be implemented at FIVB, World and Official Competitions at the Centre Court. Recommended at the FIVB Senior World Championships and at the WT 5 and 4 star tournaments. It can also be implemented at the WT 3 star tournaments whenever agreed by the relevant parties (FIVB and Organizers).

1. FOREWORD

- The FIVB has decided to implement a new procedure allowing the FIRST REFEREE to clarify decisions for the spectators. The aim is to clarify the implementation of the Rules of the Game and allow the audience to better understand and identify any controversial or relevant decisions.
- Any discussion between the REFEREE and the Players will remain exclusively personal and internal for stadium purposes. With regards to TV, the producer will retain the ability to decide what to put on air (the producer may also directly ask for the REFEREE's explanation when they think required).

2. FROM THE PERSPECTIVE OF THE ORGANIZERS

- Provide the FIRST REFEREE at the Centre Court with a wireless lapel microphone either equipped with a switch on/off button or with sound control operated by the DJ/Announcer. The sound quality of the system must be of good standard and duly tested in advance by the Referee Coach.
- This microphone should be connected with the stadium sound system and duly coordinated with the announcer/DJ mixing table.
- The Announcer and DJ must be well aware of the procedures and objectives of the procedure in order to allow the FIRST REFEREE the possibility to get on air whenever required (this is to be coordinated well in advance by the Referee Coach).
- The process of the communication is to be led by the REFEREE, not the DJ or the Announcers. It should be the REFEREE deciding that he/she wishes to address the spectators and not the Announcer asking for his/her opinion. It is nevertheless possible that the Announcer creates some atmosphere around the announcement (i.e. saying something such as "let us find out what the FIRST REFEREE has to tell us about his decision", etc).
- Communication language used may eventually be the host country language in case the FIRST REFEREE has a good level of communication in this language. Short English translation by the announcer may be required in this case. The same may apply in the opposite sense (English communication by the REFEREE being briefly translated by the Announcer into the host language).

3. FROM THE PERSPECTIVE OF THE REFEREES

- REFEREES must be effective communicators. These skills are at the top of the main characteristics shared by them. They usually communicate more non-verbally than they do through words.
- Verbal communication is currently used by REFEREES to convey messages to players, fellow officials, etc. With this specific procedure, REFEREES will be required to add to their usual communication format (i.e. hand signals), through the use of verbal communication with the audience.
- As individuals, REFEREES all have different personality traits and different ways of doing things. Despite the fact that they can't do much to change this, it will still be required to control their look, manner of speaking, and posture, in order to appropriately present themselves for this new role. This will be important as they will be dealing with qualified and extensive media and TV coverage at the main arena of some of our most visible events.

1. "what you say"

- When you are required to verbally explain your decision, first it is very important to think about the messages you are sending out and to make sure they are consistent with the non-verbal communication previously expressed through the official gestures used, your posture, your facial expression, etc.
- Your officiating requires deep comprehension of Beach Volleyball; regulations, technical knowledge, and a feel for the spirit of the game. When you provide

an explanation to the audience, show sound knowledge of the regulations and base yourself on the language of our sport's discipline, but always keep it clear and simple.

2. “how you say”

- Then you will have to think about how you say it. The tone of voice you will use will send a message itself. Be in control of your feelings during the game and learn how to use your voice to fit the situation. A loud voice may convey confidence, firmness, etc, but it may also convey abuse of authority. A soft voice may convey trust, understanding, but it may also convey lack of confidence, etc; it will all depend on how you will fit to the environment and situation.
- You will have also to assess the way you speak, if you do it clearly, quickly or slowly, friendly or aggressively, etc.

3. “when you do it”

- While running the coin toss (either at the start of the game or between sets 2 and 3), the REFEREE is required to announce the result. It is understood that this announcement is only relevant if made immediately following the coin toss (or even live and possibly on the stadium video wall if applicable). Announcements made right before the first service of the set are useless whilst also looking quite unprofessional. REFEREES should use common sense and not overlap with the entertainment or video board commercials that obviously have priority.
- At a decision that in your own opinion requires further clarification to the audience (i.e.: after a ball mark protocol, etc), or at a rule interpretation/application that has been questioned for clarification by any of the team Captains.
- More often communication is required. In accordance to the concept that inspired this procedure, the REFEREE must address the spectators about the nature and rational of the call (or no call) made. A “script for verbal communication with the audience” follows.

4. “how you do it”

- Listen to the Captain's request for clarification. First deal with him/her directly, explaining your decision and/or issuing the appropriate warning or misconduct sanction if required.
- Only after this should you start your verbal explanation to the crowd, opening your microphone immediately before commencing.
- Your verbal explanation must clarify the prior decision that led to the request for clarification by the Captain, and any further action that you might have taken from then on.
- It must be communicated in good English and accurate technical terminology.

4. FROM THE PERSPECTIVE OF THE REFEREE COACH

- Referee Coaches at the events where this procedure may apply will be responsible to coordinate all arrangements and instruct procedures to REFEREES, DJs, announcers, etc.
- The Referee Coach should test the characteristics and quality of the sound system, including the referee microphone prior to the start of the event.
- A visual signal by the FIRST REFEREE that the production team could identify easily should be established to indicate that the referee wants to speak. The recommended signal is to place the right arm across the chest with the open hand pointing towards the shoulder.
- Referee Coaches should also very carefully select the REFEREES who have the best profile and the minimum required English communication skills, in order to assign them for the matches where this procedure will apply.
- Finally they are required to include any comments in their final BVB/25 report, based on relevant feedback collected from all parties' concerned (audience, referees, players, TV, media, DJs, announcers, organizers, etc).

5. SCRIPT FOR VERBAL COMMUNICATION WITH AUDIENCE

To be utilised in accordance with “First Referee Verbal Communication with the Audience”, above.

5.1 RESULT OF THE COIN TOSS

- Good Morning/Afternoon/Evening Ladies and Gentlemen.
- Team XXX will serve on my right/left hand side.
- Let's play!

5.2 RESULT OF THE BALL MARK PROTOCOL

- I have reviewed the ball mark and the ball is in/out.

5.3 MEDICAL TIME-OUT / FORFEIT

- Player number 1/2 from Team XXX has requested a Medical Time-Out. He / She will be given a maximum of 5 minutes to recover and resume play.
- At the conclusion of the recovery time the player is unable to continue, XXX team forfeits the match due to being incomplete.

5.4 BALL HANDLING

- Hard driven ball: the attack was judged as a “hard driven ball”, hence the play was allowed to continue.
- *Note: setting overhand with fingers is not subject to discussion. Use only official hand signals.*

5.5 INTERFERENCE

- Interference: Player number 1/2 from Team XXX prevented the opponent from playing the ball – so is judged to have interfered.
- No interference: Although player number 1/2 from Team XXX did cross into the opponent's space, this did not interfere with the ability of Team YYY to play the ball.

5.6 CONTACT WITH THE NET

- Contact with the net was not judged a fault, since:
* (choose the correct option))
 - The ball was on the sand beforehand
 - The player contacted the net outside the antennas and did not interfere with play
 - The player was not in the action of playing the ball
- Double fault: As both players touched the net at the same time, the rally is replayed.

5.7 WARNINGS AND SANCTIONS

- Minor misconduct: the yellow card issued to player number 1/2 Team XXX is a warning. This warning is not a sanction but a symbol that the team has reached the sanctioning level for the match.
- Rude conduct: the red card issued to player number 1/2 Team XXX is a penalty. The result is a point and service for the opponent.
- Second Rude conduct in the set: the red card issued to player number 1/2 Team XXX is a penalty. The result is a point and service for the opponent. This athlete has reached his/her limit for

- penalties in this set, and the next time he/she is sanctioned for Rude conduct he/she will be expelled for the remainder of the set.
- Delay warning: the yellow card issued to Team XXX for delaying the game is a warning for the remainder of the match.
 - Delay penalty: the red card issued to Team XXX for repeatedly delaying the game results in a point and service for the opponent.

5.8 ADDITIONAL NOTES

- Any situation not mentioned in this script should be explained by keeping the explanation simple and straight forward while at the same time trying to ensure that the basic rule application is also covered.
- Please note that where you see “Team XXX” should be replaced by the name of the country when addressing the crowd.

IMPORTANT: For additional information on the 2019-2020 FIVB Beach Volleyball, or FIVB Beach Volleyball - sanctioned events, please go to the FIVB web site: <http://www.fivb.org/EN/BeachVolleyball/>